



**Water Monitoring Result at C7 - Windsor House
Mid-Flood Tide**

Date	Time	Weather Condition	Sampling Depth m	Water Temperature °C			pH		Salinity ppt		DO Saturation %		DO mg/L		Turbidity NTU		Suspended Solids mg/L							
				Value	Average	Value	Average	Value	Average	Value	Average	Value	Average	Value	Average	Value	Average							
28/7/2015	-	Fine	Middle	-	-	-	-	-	-	-	-	-	-	-	-	-	-	-						
	-		Middle	-	-	-	-	-	-	-	-	-	-	-	-	-	-	-						
30/7/2015	18:35	Cloudy	Middle	-	27.40	27.40	27.40	8.23	8.23	8.27	26.68	26.68	26.68	87.8	88.5	88.3	5.98	6.03	6.02	2.04	2.01	2.01	3	3.00
	18:37		Middle	-	27.40	27.40	27.40	8.30	8.30	8.27	26.67	26.67	26.68	88.5	88.4	88.3	6.03	6.02	6.02	2.00	2.00	2.01	3	3.00
1/8/2015	21:32	Fine	Middle	-	25.93	25.93	25.94	7.58	7.58	7.58	27.20	27.20	27.19	88.3	88.1	88.0	6.26	6.25	6.24	1.98	1.78	1.84	3	3.50
	21:33		Middle	-	25.94	25.94	25.94	7.57	7.57	7.58	27.18	27.18	27.19	87.8	87.9	88.0	6.22	6.24	6.24	1.76	1.83	1.84	4	3.50
3/8/2015	19:38	Fine	Middle	-	27.40	27.40	27.45	7.46	7.46	7.46	29.02	29.02	29.00	91.9	91.7	91.4	6.18	6.16	6.14	1.15	1.09	1.05	2	2.00
	19:39		Middle	-	27.49	27.49	27.45	7.46	7.46	7.46	28.99	28.98	29.00	91.1	91.0	91.4	6.12	6.11	6.14	1.08	0.87	1.05	2	2.00
5/8/2015	10:43	Fine	Middle	-	27.20	27.20	27.25	8.23	8.23	8.22	29.75	29.75	29.76	73.9	72.9	72.7	4.91	4.90	4.87	2.21	2.21	2.23	4	4.00
	10:45		Middle	-	27.30	27.30	27.25	8.20	8.20	8.22	29.76	29.76	29.76	73.1	70.8	72.7	4.91	4.76	4.87	2.25	2.23	2.23	4	4.00
7/8/2015	12:45	Fine	Middle	-	28.10	28.10	28.15	8.21	8.21	8.22	29.56	29.56	29.57	86.4	85.9	85.8	5.72	5.69	5.68	2.96	2.81	2.83	3	2.50
	12:47		Middle	-	28.20	28.20	28.15	8.23	8.23	8.22	29.58	29.58	29.57	85.4	85.3	85.8	5.66	5.65	5.68	2.77	2.76	2.83	2	2.50
10/8/2015	13:30	Cloudy	Middle	-	27.70	27.70	27.75	8.33	8.33	8.32	30.38	30.38	30.38	81.7	81.3	81.2	5.40	5.40	5.39	6.12	6.36	6.24	3	3.50
	13:32		Middle	-	27.80	27.80	27.75	8.30	8.30	8.32	30.38	30.38	30.38	80.9	80.9	81.2	5.37	5.37	5.39	6.13	6.35	6.24	4	3.50
12/8/2015	15:15	Fine	Middle	-	28.40	28.40	28.65	8.23	8.23	8.21	31.03	31.03	31.03	74.5	73.4	73.7	4.85	4.78	4.79	2.51	2.51	2.47	6	6.50
	15:17		Middle	-	28.90	28.90	28.65	8.18	8.18	8.21	31.02	31.02	31.03	73.3	73.4	73.7	4.77	4.77	4.79	2.46	2.39	2.47	7	6.50
14/8/2015	18:27	Cloudy	Middle	-	26.00	26.00	26.05	8.40	8.40	8.39	29.87	29.87	29.87	75.2	76.5	75.3	5.20	5.23	5.16	3.26	3.44	3.32	4	4.00
	18:28		Middle	-	26.10	26.10	26.05	8.37	8.37	8.39	29.87	29.87	29.87	75.4	73.9	75.3	5.16	5.06	5.16	3.28	3.30	3.32	4	4.00
17/8/2015	10:35	Fine	Middle	-	26.60	26.60	26.55	8.12	8.12	8.12	30.40	30.40	30.40	70.4	69.8	69.4	4.75	4.71	4.74	2.87	2.87	2.85	5	4.50
	10:37		Middle	-	26.50	26.50	26.55	8.11	8.11	8.12	30.39	30.39	30.40	69.7	67.8	69.4	4.71	4.78	4.74	2.87	2.77	2.85	4	4.50
19/8/2015	9:49	Fine	Middle	-	26.90	26.90	26.95	8.08	8.08	8.09	30.37	30.37	30.37	62.6	63.0	63.5	4.21	4.24	4.27	8.52	8.62	8.55	9	8.50
	9:51		Middle	-	27.00	27.00	26.95	8.09	8.09	8.09	30.37	30.37	30.37	63.7	64.5	63.5	4.29	4.34	4.27	8.49	8.55	8.55	8	8.50
21/8/2015	11:22	Fine	Middle	-	28.30	28.30	28.25	8.07	8.07	8.08	31.05	31.05	31.06	67.0	66.6	66.3	4.40	4.35	4.35	2.30	2.33	2.36	3	3.00
	11:24		Middle	-	28.20	28.20	28.25	8.08	8.08	8.08	31.06	31.06	31.06	66.1	65.6	66.3	4.34	4.31	4.35	2.32	2.50	2.36	3	3.00
25/8/2015	17:00	Fine	Middle	-	27.60	27.60	27.75	8.23	8.23	8.23	32.16	32.16	32.15	74.9	76.0	75.9	4.92	4.99	4.98	2.75	2.74	2.74	7	6.00
	17:02		Middle	-	27.90	27.90	27.75	8.23	8.23	8.23	32.13	32.13	32.15	76.8	75.9	75.9	5.04	4.98	4.98	2.74	2.74	2.74	5	6.00
27/8/2015	17:50	Fine	Middle	-	27.20	27.20	27.25	8.19	8.19	8.20	32.47	32.47	32.47	72.9	73.8	73.7	4.82	4.88	4.87	3.76	3.76	3.81	6	5.00
	17:52		Middle	-	27.30	27.30	27.25	8.20	8.20	8.20	32.47	32.47	32.47	73.2	74.7	73.7	4.84	4.94	4.87	3.86	3.87	3.81	4	5.00

Remarks:
Single underline denotes exceedance over Action Level.
Double underline denotes exceedance over Limit Level.



**Water Monitoring Result at C1 - HKCEC Extension
Mid-Flood Tide**

Date	Time	Weather Condition	Sampling Depth		Water Temperature		pH			Salinity		DO Saturation		DO		Turbidity		Suspended Solids						
					°C		-		ppt		%		mg/L		NTU		mg/L							
			m	Value	Average	Value	Average	Value	Average	Value	Average	Value	Average	Value	Average	Value	Average	Value	Average					
28/7/2015	16:25	Fine	Middle	2.5	27.60	27.60	27.60	8.18	8.18	8.18	26.74	26.74	26.75	73.9	73.8	73.0	5.02	5.01	4.96	1.52	1.52	1.52	7	6.50
	16:27		Middle	2.5	27.60	27.60	27.60	8.18	8.18	8.18	26.75	26.75	26.75	71.5	72.8	73.0	4.85	4.94	4.96	1.51	1.52	1.52	6	
30/7/2015	16:57	Cloudy	Middle	2.5	26.40	26.40	26.40	8.33	8.33	8.33	27.81	27.81	27.82	65.0	64.0	64.0	4.48	4.41	4.36	3.94	3.97	3.92	8	8.00
	16:59		Middle	2.5	26.40	26.40	26.40	8.33	8.33	8.33	27.83	27.83	27.82	63.5	63.3	64.0	4.28	4.25	4.36	3.89	3.86	3.92	8	
1/8/2015	17:16	Fine	Middle	2.5	26.90	26.90	26.95	8.17	8.17	8.19	28.44	28.44	28.50	68.1	68.3	69.0	4.62	4.64	4.69	2.41	2.39	2.39	5	4.50
	17:18		Middle	2.5	27.00	27.00	26.95	8.20	8.20	8.19	28.56	28.56	28.50	69.2	70.5	69.0	4.70	4.79	4.69	2.38	2.37	2.39	4	
3/8/2015	22:10	Fine	Middle	2.5	26.33	26.33	26.33	7.66	7.66	7.66	29.97	29.97	29.98	84.8	84.5	84.4	5.76	5.75	5.74	4.73	5.03	4.83	4	4.50
	22:11		Middle	2.5	26.33	26.33	26.33	7.65	7.65	7.66	29.98	29.98	29.98	84.1	84.0	84.4	5.73	5.72	5.74	4.76	4.80	4.83	5	
5/8/2015	10:00	Fine	Middle	2.5	26.20	26.20	26.25	8.26	8.26	8.26	30.45	30.45	30.45	69.4	68.7	68.7	4.72	4.68	4.68	4.75	4.76	4.77	5	5.00
	10:02		Middle	2.5	26.30	26.30	26.25	8.26	8.26	8.26	30.44	30.44	30.45	68.5	68.0	68.7	4.66	4.64	4.68	4.79	4.79	4.77	5	
7/8/2015	11:06	Fine	Middle	2.5	27.10	27.10	27.15	8.29	8.29	8.29	30.54	30.54	30.54	72.9	72.4	72.0	4.88	4.85	4.82	6.51	6.53	6.59	10	9.50
	11:08		Middle	2.5	27.20	27.20	27.15	8.28	8.28	8.29	30.53	30.53	30.54	71.8	71.0	72.0	4.81	4.75	4.82	6.64	6.69	6.59	9	
10/8/2015	16:00	Cloudy	Middle	2.5	26.70	26.70	26.70	8.40	8.40	8.40	31.15	31.15	31.15	86.6	86.9	86.5	5.32	5.35	5.32	4.69	4.75	4.65	5	5.00
	16:02		Middle	2.5	26.70	26.70	26.70	8.39	8.39	8.40	31.15	31.15	31.15	86.3	86.3	86.5	5.30	5.30	5.32	4.58	4.57	4.65	5	
12/8/2015	17:12	Fine	Middle	2.5	27.10	27.10	27.15	8.34	8.34	8.34	31.35	31.35	31.35	75.9	75.0	73.8	5.06	5.00	4.92	4.40	4.38	4.39	8	8.00
	17:14		Middle	2.5	27.20	27.20	27.15	8.33	8.33	8.34	31.35	31.35	31.35	72.5	71.7	73.8	4.84	4.78	4.92	4.39	4.39	4.39	8	
14/8/2015	17:16	Cloudy	Middle	2.5	26.50	26.50	26.50	8.25	8.25	8.25	30.36	30.36	30.36	65.8	65.1	65.7	4.46	4.42	4.45	4.70	4.69	4.68	5	5.00
	17:18		Middle	2.5	26.50	26.50	26.50	8.25	8.25	8.25	30.36	30.36	30.36	65.3	66.5	65.7	4.42	4.51	4.45	4.65	4.66	4.68	5	
17/8/2015	9:05	Fine	Middle	3.0	25.90	25.90	19.43	8.20	8.20	8.20	30.83	30.83	30.83	72.9	73.9	74.1	4.96	5.05	5.06	4.23	4.27	4.25	6	5.00
	9:07		Middle	3.0	0.00	25.90	19.43	8.19	8.19	8.20	30.83	30.83	30.83	75.0	74.6	74.1	5.12	5.09	5.06	4.28	4.23	4.25	4	
19/8/2015	9:01	Fine	Middle	2.5	25.90	25.90	25.95	8.17	8.17	8.17	31.21	31.21	31.20	59.4	58.4	59.2	4.04	3.97	4.03	4.31	4.31	4.23	8	7.50
	9:03		Middle	2.5	26.00	26.00	25.95	8.17	8.17	8.17	31.19	31.19	31.20	59.5	59.3	59.2	4.05	4.04	4.03	4.15	4.15	4.23	7	
21/8/2015	8:58	Fine	Middle	2.5	26.10	26.10	26.15	8.18	8.18	8.18	31.29	31.29	31.29	66.9	66.0	65.7	4.54	4.47	4.45	3.27	3.32	3.35	4	3.50
	9:00		Middle	2.5	26.20	26.20	26.15	8.17	8.17	8.18	31.29	31.29	31.29	65.4	64.4	65.7	4.43	4.37	4.45	3.36	3.43	3.35	3	
25/8/2015	16:03	Fine	Middle	2.5	26.20	26.20	26.25	8.32	8.32	8.32	32.47	32.47	32.47	74.8	74.0	73.5	5.03	4.96	4.94	6.42	6.42	6.33	12	12.00
	16:05		Middle	2.5	26.30	26.30	26.25	8.31	8.31	8.32	32.47	32.47	32.47	73.6	71.5	73.5	4.95	4.80	4.94	6.19	6.27	6.33	12	
27/8/2015	16:35	Fine	Middle	2.5	26.70	26.70	26.75	8.24	8.24	8.24	32.44	32.44	32.44	74.2	73.8	74.1	4.95	4.92	4.94	6.83	6.71	6.78	8	8.00
	16:37		Middle	2.5	26.80	26.80	26.75	8.24	8.24	8.24	32.43	32.43	32.44	74.2	74.0	74.1	4.95	4.94	4.94	6.68	6.91	6.78	8	

Remarks:
Single underline denotes exceedance over Action Level.
Double underline denotes exceedance over Limit Level.



**Water Monitoring Result at P1 - HKCEC Phase I
Mid-Flood Tide**

Date	Time	Weather Condition	Sampling Depth		Water Temperature			pH			Salinity			DO Saturation		DO		Turbidity		Suspended Solids				
					°C		-		ppt		%		mg/L		NTU		mg/L							
			m	Value	Average	Value	Average	Value	Average	Value	Average	Value	Average	Value	Average	Value	Average	Value	Average	Value	Average			
28/7/2015	16:05	Fine	Middle	2.5	29.00	29.00	29.10	8.18	8.18	8.19	26.04	26.04	26.04	79.8	79.7	79.6	5.31	5.30	5.29	3.63	3.67	3.68	5	6.00
	16:07		Middle	2.5	29.20	29.20		8.20	8.20		26.04	26.04		79.2	79.7		5.26	5.30		3.69	3.71		7	
30/7/2015	16:45	Cloudy	Middle	2.5	27.40	27.40	27.40	8.31	8.31	8.34	26.80	26.80	26.80	87.6	86.0	86.7	5.97	5.86	5.91	6.34	6.39	6.46	10	9.50
	16:47		Middle	2.5	27.40	27.40		8.37	8.37		26.80	26.80		86.6	86.5		5.90	5.89		6.45	6.65		9	
1/8/2015	17:00	Fine	Middle	2.5	28.50	28.50	28.50	8.27	8.27	8.27	28.37	28.37	28.43	77.0	78.0	76.4	5.11	5.18	5.06	2.99	2.99	2.97	3	4.00
	17:02		Middle	2.5	28.50	28.50		8.26	8.26		28.49	28.49		75.9	74.6		5.02	4.94		2.95	2.95		5	
3/8/2015	21:50	Fine	Middle	2.5	26.27	26.27	26.27	7.64	7.64	7.64	29.53	29.53	29.53	80.0	80.2	79.6	5.47	5.49	5.45	3.56	3.48	3.48	3	3.00
	21:51		Middle	2.5	26.26	26.26		7.63	7.63		29.53	29.53		79.2	79.0		5.42	5.40		3.45	3.42		3	
5/8/2015	9:45	Fine	Middle	2.5	27.10	27.10	27.20	8.17	8.17	8.20	29.97	29.97	29.95	71.2	69.1	68.9	4.79	4.64	4.63	2.44	2.47	2.42	3	3.50
	9:47		Middle	2.5	27.30	27.30		8.22	8.22		29.92	29.92		68.0	67.3		4.57	4.53		2.47	2.31		4	
7/8/2015	10:50	Fine	Middle	2.5	29.00	29.00	29.10	8.30	8.30	8.31	29.66	29.66	29.64	86.0	83.5	84.2	5.60	5.45	5.49	3.51	3.51	3.44	5	4.50
	10:52		Middle	2.5	29.20	29.20		8.32	8.32		29.61	29.61		84.3	83.0		5.49	5.41		3.39	3.36		4	
10/8/2015	15:44	Cloudy	Middle	2.5	27.90	27.90	27.90	8.32	8.32	8.35	30.96	30.96	30.96	86.4	86.4	86.9	5.70	5.70	5.73	4.69	4.57	4.69	7	6.00
	15:46		Middle	2.5	27.90	27.90		8.37	8.37		30.95	30.95		87.3	87.4		5.76	5.77		4.68	4.81		5	
12/8/2015	16:58	Fine	Middle	2.5	27.90	27.90	28.00	8.23	8.24	8.27	31.24	31.24	31.21	75.5	72.4	72.2	4.97	4.76	4.75	4.04	4.01	3.96	8	7.50
	17:00		Middle	2.5	28.10	28.10		8.30	8.30		31.18	31.18		70.7	70.1		4.65	4.61		3.89	3.88		7	
14/8/2015	17:00	Cloudy	Middle	2.5	27.40	27.40	27.45	8.23	8.23	8.23	30.24	30.24	30.24	74.5	74.3	73.8	4.97	4.95	4.92	5.35	5.22	5.25	6	6.00
	17:02		Middle	2.5	27.50	27.50		8.23	8.23		30.23	30.23		73.7	72.7		4.92	4.85		5.14	5.28		6	
17/8/2015	8:45	Fine	Middle	3.0	27.00	27.00	27.10	8.21	8.21	8.21	31.00	31.00	31.00	78.9	79.4	79.8	5.27	5.30	5.33	4.55	4.52	4.52	3	3.00
	8:47		Middle	3.0	27.20	27.20		8.20	8.20		31.00	31.00		80.6	80.2		5.38	5.36		4.50	4.49		3	
19/8/2015	8:45	Fine	Middle	2.5	26.90	26.90	27.00	8.15	8.15	8.16	30.64	30.64	30.63	69.9	69.1	67.6	4.70	4.63	4.54	3.74	3.58	3.63	6	6.00
	8:47		Middle	2.5	27.10	27.10		8.16	8.16		30.62	30.62		66.2	65.2		4.44	4.37		3.55	3.63		6	
21/8/2015	8:42	Fine	Middle	2.5	26.90	26.90	27.00	8.15	8.15	8.17	30.84	30.84	30.82	77.8	77.3	76.3	5.22	5.18	5.12	3.75	3.75	3.76	3	3.00
	8:44		Middle	2.5	27.10	27.10		8.18	8.18		30.80	30.80		75.7	74.4		5.07	4.99		3.75	3.79		3	
25/8/2015	15:47	Fine	Middle	2.5	27.80	27.80	27.95	8.25	8.25	8.27	32.49	32.49	32.45	87.4	86.2	86.0	5.72	5.64	5.62	5.08	5.07	5.20	7	8.00
	15:49		Middle	2.5	28.10	28.10		8.29	8.29		32.41	32.41		85.5	84.7		5.58	5.53		5.21	5.44		9	
27/8/2015	16:15	Fine	Middle	2.5	27.90	27.90	28.00	8.14	8.14	8.16	32.49	32.49	32.49	82.9	83.6	83.0	5.41	5.45	5.41	4.81	4.70	4.73	2	2.50
	16:17		Middle	2.5	28.10	28.10		8.18	8.18		32.48	32.48		83.1	82.3		5.42	5.37		4.69	4.73		3	

Remarks:
Single underline denotes exceedance over Action Level.
Double underline denotes exceedance over Limit Level.



**Water Monitoring Result at P3 - APA
Mid-Flood Tide**

Date	Time	Weather Condition	Sampling Depth		Water Temperature		pH		Salinity		DO Saturation		DO		Turbidity		Suspended Solids							
					°C		-		ppt		%		mg/L		NTU		mg/L							
			m	Value	Average	Value	Average	Value	Average	Value	Average	Value	Average	Value	Average	Value	Average	Value	Average					
28/7/2015	16:10	Fine	Middle	2.5	28.30	28.30	28.35	8.18	8.18	8.18	26.26	26.26	26.26	77.8	78.0	78.1	5.23	5.24	5.25	2.27	2.21	2.25	3	3.50
	16:12		Middle	2.5	28.40	28.40	28.35	8.17	8.17	8.18	26.25	26.25	26.26	78.1	78.6	78.1	5.25	5.28	5.25	2.26	2.26	2.25	4	
30/7/2015	16:48	Cloudy	Middle	2.5	26.70	26.70	26.75	8.36	8.36	8.36	27.36	27.36	27.36	74.3	73.4	72.5	5.11	5.04	4.98	3.00	3.01	3.05	5	4.50
	16:50		Middle	2.5	26.80	26.80	26.75	8.35	8.35	8.36	27.35	27.35	27.36	71.7	70.7	72.5	4.93	4.85	4.98	3.08	3.11	3.05	4	
1/8/2015	17:04	Fine	Middle	2.5	27.20	27.20	27.25	8.26	8.26	13.26	28.45	28.45	28.44	74.2	73.9	72.9	5.02	5.00	4.93	1.99	2.00	2.00	3	3.00
	17:06		Middle	2.5	27.30	27.30	27.25	8.25	8.25	13.26	28.42	28.42	28.44	72.1	71.3	72.9	4.88	4.82	4.93	2.00	1.99	2.00	3	
3/8/2015	21:55	Fine	Middle	2.5	26.29	26.30	26.29	7.65	7.65	7.65	29.64	29.64	29.51	82.6	81.6	81.7	5.64	5.58	5.59	4.01	4.19	4.07	3	3.50
	21:56		Middle	2.5	26.28	26.28	26.29	7.65	7.65	7.65	29.37	29.37	29.51	81.4	81.2	81.7	5.57	5.55	5.59	4.10	3.98	4.07	4	
5/8/2015	9:48	Fine	Middle	2.5	26.60	26.60	26.65	8.22	8.22	8.22	30.37	30.37	30.35	70.5	70.4	68.9	4.77	4.76	4.66	3.02	2.98	3.00	5	4.50
	9:50		Middle	2.5	26.70	26.70	26.65	8.22	8.22	8.22	30.32	30.32	30.35	68.1	66.7	68.9	4.60	4.51	4.66	2.99	3.01	3.00	4	
7/8/2015	10:54	Fine	Middle	2.5	27.90	27.90	28.00	8.31	8.31	8.30	29.86	29.86	29.84	78.1	79.9	79.8	5.18	5.24	5.27	2.73	2.76	2.81	5	5.00
	10:56		Middle	2.5	28.10	28.10	28.00	8.29	8.29	8.30	29.82	29.82	29.84	80.1	80.9	79.8	5.30	5.36	5.27	2.81	2.94	2.81	5	
10/8/2015	15:48	Cloudy	Middle	2.5	26.90	26.90	26.95	8.37	8.37	8.38	31.16	31.16	31.16	85.0	84.4	83.6	5.69	5.65	5.60	4.61	4.60	4.46	6	5.50
	15:50		Middle	2.5	27.00	27.00	26.95	8.38	8.38	8.38	31.16	31.16	31.16	82.9	82.2	83.6	5.55	5.50	5.60	4.33	4.30	4.46	5	
12/8/2015	17:02	Fine	Middle	2.5	27.50	27.50	27.40	8.31	8.31	8.30	30.91	30.91	31.11	70.0	70.3	70.5	4.67	4.68	4.70	3.65	3.66	3.67	6	6.00
	17:04		Middle	2.5	27.30	27.30	27.40	8.28	8.28	8.30	31.31	31.31	31.11	70.7	71.1	70.5	4.71	4.73	4.70	3.68	3.70	3.67	6	
14/8/2015	17:04	Cloudy	Middle	2.5	26.60	26.60	26.65	8.23	8.23	8.23	30.33	30.33	30.33	67.4	67.6	66.9	4.56	4.57	4.53	3.64	3.72	3.69	6	5.00
	17:06		Middle	2.5	26.70	26.70	26.65	8.22	8.22	8.23	30.32	30.32	30.33	67.3	65.2	66.9	4.56	4.41	4.53	3.71	3.70	3.69	4	
17/8/2015	8:50	Fine	Middle	3.0	28.40	28.40	28.50	8.19	8.19	8.18	30.94	30.94	30.94	69.3	69.7	69.5	4.09	4.31	4.15	3.44	3.38	3.39	5	4.50
	8:52		Middle	3.0	28.60	28.60	28.50	8.17	8.17	8.18	30.94	30.94	30.94	69.0	70.0	69.5	4.07	4.14	4.15	3.37	3.37	3.39	4	
19/8/2015	8:49	Fine	Middle	2.5	26.20	26.20	26.25	8.15	8.15	8.14	30.96	30.96	30.96	61.7	60.8	60.7	4.18	4.12	4.11	3.15	3.18	3.18	5	5.50
	8:51		Middle	2.5	26.30	26.30	26.25	8.13	8.13	8.14	30.95	30.95	30.96	59.4	60.8	60.7	4.03	4.12	4.11	3.19	3.20	3.18	6	
21/8/2015	8:46	Fine	Middle	2.5	26.40	26.40	26.45	8.19	8.19	8.19	30.86	30.86	30.86	69.1	67.8	67.2	4.68	4.59	4.53	2.43	2.45	2.40	3	3.50
	8:48		Middle	2.5	26.50	26.50	26.45	8.19	8.19	8.19	30.85	30.85	30.86	66.3	65.6	67.2	4.40	4.44	4.53	2.37	2.36	2.40	4	
25/8/2015	15:51	Fine	Middle	2.5	26.90	26.90	27.00	8.29	8.29	8.28	32.55	32.55	32.52	72.1	71.4	70.8	4.79	4.74	4.70	5.57	5.95	5.63	8	8.50
	15:53		Middle	2.5	27.10	27.10	27.00	8.26	8.26	8.28	32.49	32.49	32.52	70.6	69.1	70.8	4.68	4.59	4.70	5.65	5.34	5.63	9	
27/8/2015	16:20	Fine	Middle	2.5	26.90	26.90	27.00	8.18	8.18	8.17	32.48	32.48	32.48	77.1	76.2	76.8	5.13	5.08	5.11	4.54	4.50	4.50	4	3.50
	16:22		Middle	2.5	27.10	27.10	27.00	8.16	8.16	8.17	32.47	32.47	32.48	77.4	76.5	76.8	5.14	5.09	5.11	4.49	4.45	4.50	3	

Remarks:
Single underline denotes exceedance over Action Level.
Double underline denotes exceedance over Limit Level.



**Water Monitoring Result at P4 - SOC
Mid-Flood Tide**

Date	Time	Weather Condition	Sampling Depth		Water Temperature		pH			Salinity		DO Saturation		DO		Turbidity		Suspended Solids						
					°C		-		ppt		%		mg/L		NTU		mg/L							
			m	Value	Average	Value	Average	Value	Average	Value	Average	Value	Average	Value	Average	Value	Average	Value	Average					
28/7/2015	16:15	Fine	Middle	2.5	27.90	27.90	27.95	8.18	8.18	8.19	26.62	26.62	26.62	80.6	80.8	81.0	5.44	5.46	5.47	1.99	1.89	1.91	4	4.00
	16:17		Middle	2.5	28.00	28.00		8.19	8.19		26.62	26.62		81.3	81.1		5.49	5.47		1.88	1.88		4	
30/7/2015	16:51	Cloudy	Middle	2.5	26.80	26.80	26.80	8.36	8.36	8.36	27.59	27.59	27.59	77.5	75.0	75.1	5.21	5.14	5.12	3.58	3.63	3.68	6	6.00
	16:53		Middle	2.5	26.80	26.80		8.35	8.35		27.59	27.59		74.3	73.6		5.09	5.04		3.70	3.81		6	
1/8/2015	17:08	Fine	Middle	2.5	26.90	26.90	26.95	8.23	8.23	8.23	28.51	28.51	28.51	75.0	74.8	74.8	5.10	5.08	5.09	2.17	2.19	2.15	4	4.00
	17:10		Middle	2.5	27.00	27.00		8.22	8.22		28.51	28.51		74.9	74.6		5.09	5.07		2.19	2.04		4	
3/8/2015	21:59	Fine	Middle	2.5	26.32	26.32	26.32	7.65	7.66	7.65	29.73	29.73	29.73	89.6	89.8	89.7	6.11	6.13	6.12	4.99	5.04	5.08	3	3.50
	22:00		Middle	2.5	26.32	26.32		7.65	7.65		29.73	29.73		89.7	89.6		6.12	6.11		5.13	5.17		4	
5/8/2015	9:52	Fine	Middle	2.5	26.40	26.40	26.45	8.24	8.24	8.25	30.37	30.37	30.37	70.6	69.7	69.4	4.79	4.73	4.71	3.85	3.84	3.84	5	5.00
	9:54		Middle	2.5	26.50	26.50		8.25	8.25		30.36	30.36		68.8	68.3		4.67	4.64		3.84	3.82		5	
7/8/2015	10:58	Fine	Middle	2.5	28.10	28.10	27.85	8.28	8.28	8.28	30.21	30.21	30.22	72.5	68.2	69.5	4.83	4.54	4.63	2.86	2.53	2.62	4	4.50
	11:00		Middle	2.5	27.60	27.60		8.27	8.27		30.22	30.22		67.5	69.9		4.50	4.65		2.54	2.53		5	
10/8/2015	15:52	Cloudy	Middle	2.5	26.80	26.80	26.85	8.38	8.38	8.39	31.12	31.12	31.13	86.4	87.5	86.4	5.80	5.88	5.80	4.53	4.50	4.54	7	6.50
	15:54		Middle	2.5	26.90	26.90		8.40	8.40		31.13	31.13		87.7	84.1		5.89	5.63		4.52	4.61		6	
12/8/2015	17:05	Fine	Middle	2.5	27.20	27.20	27.25	8.29	8.29	8.30	31.54	31.54	31.54	78.6	78.0	78.0	5.23	5.19	5.19	5.65	5.57	5.54	9	9.00
	17:07		Middle	2.5	27.30	27.30		8.31	8.31		31.53	31.53		77.8	77.7		5.17	5.17		5.47	5.47		9	
14/8/2015	17:08	Cloudy	Middle	2.5	26.60	26.60	26.60	8.24	8.24	8.25	30.32	30.32	30.32	79.3	79.0	78.6	5.37	5.35	5.32	4.81	4.82	4.82	5	6.00
	17:10		Middle	2.5	26.60	26.60		8.25	8.25		30.32	30.32		78.3	77.7		5.30	5.25		4.83	4.83		7	
17/8/2015	8:55	Fine	Middle	3.0	26.40	26.40	26.45	8.19	8.19	8.19	30.83	30.83	30.83	76.2	76.6	77.1	5.16	5.18	5.15	4.33	4.30	4.30	4	4.00
	8:57		Middle	3.0	26.50	26.50		8.19	8.19		30.83	30.83		77.3	78.3		5.24	5.00		4.29	4.29		4	
19/8/2015	8:53	Fine	Middle	2.5	26.10	26.10	26.15	8.14	8.14	8.16	31.08	31.08	31.08	69.7	70.0	69.5	4.73	4.74	4.72	4.69	4.59	4.65	5	5.50
	8:55		Middle	2.5	26.20	26.20		8.17	8.17		31.07	31.07		69.2	69.2		4.70	4.70		4.65	4.67		6	
21/8/2015	8:50	Fine	Middle	2.5	26.20	26.20	26.25	8.18	8.18	8.18	31.09	31.09	31.09	70.0	70.0	69.3	4.74	4.74	4.69	3.25	3.23	3.21	4	4.00
	8:52		Middle	2.5	26.30	26.30		8.18	8.18		31.09	31.09		68.9	68.2		4.67	4.62		3.23	3.14		4	
25/8/2015	15:55	Fine	Middle	2.5	27.10	27.10	26.85	8.26	8.26	8.28	32.27	32.27	32.36	75.6	73.9	73.3	5.06	4.95	4.91	5.92	5.65	5.68	9	8.50
	15:57		Middle	2.5	26.60	26.60		8.30	8.30		32.45	32.45		71.5	72.3		4.79	4.84		5.56	5.58		8	
27/8/2015	16:25	Fine	Middle	2.5	27.00	27.00	27.05	8.19	8.19	8.20	32.43	32.43	32.44	83.4	84.2	83.7	5.54	5.59	5.55	5.03	5.05	5.04	6	6.00
	16:27		Middle	2.5	27.10	27.10		8.21	8.21		32.44	32.44		83.4	83.7		5.54	5.53		5.06	5.00		6	

Remarks:
 Single underline denotes exceedance over Action Level.
 Double underline denotes exceedance over Limit Level.



**Water Monitoring Result at P5 - WCT / RT / IT
Mid-Flood Tide**

Date	Time	Weather Condition	Sampling Depth		Water Temperature		pH			Salinity		DO Saturation		DO		Turbidity		Suspended Solids						
					°C		-		ppt		%		mg/L		NTU		mg/L							
			m	Value	Average	Value	Average	Value	Average	Value	Average	Value	Average	Value	Average	Value	Average	Value	Average					
28/7/2015	16:20	Fine	Middle	2.5	27.60	27.60	27.65	8.18	8.18	8.18	26.77	26.77	26.77	78.1	75.2	75.8	5.24	5.10	5.13	1.66	1.51	1.58	3	3.50
	16:22		Middle	2.5	27.70	27.70	27.65	8.18	8.18	8.18	26.77	26.77	26.77	75.1	74.8	75.8	5.09	5.07	5.13	1.51	1.64	1.58	4	
30/7/2015	16:54	Cloudy	Middle	2.5	26.50	26.50	26.50	8.34	8.34	8.34	27.78	27.78	27.78	74.2	73.1	72.8	5.10	5.02	5.00	3.87	3.87	3.88	5	5.00
	16:56		Middle	2.5	26.50	26.50	26.50	8.34	8.34	8.34	27.77	27.77	27.78	72.2	71.6	72.8	4.95	4.93	5.00	3.82	3.96	3.88	5	
1/8/2015	17:12	Fine	Middle	2.5	26.80	26.80	26.90	8.20	8.20	8.18	28.65	28.65	28.65	67.0	70.3	68.0	4.55	4.78	4.62	2.62	2.63	2.60	4	4.00
	17:14		Middle	2.5	27.00	27.00	26.90	8.15	8.15	8.18	28.64	28.64	28.65	67.1	67.7	68.0	4.56	4.60	4.62	2.58	2.55	2.60	4	
3/8/2015	22:05	Fine	Middle	2.5	26.14	26.14	26.14	7.65	7.65	7.65	29.92	29.92	29.92	81.6	81.5	81.4	5.58	5.57	5.56	5.03	4.91	4.89	4	3.50
	22:06		Middle	2.5	26.13	26.13	26.14	7.65	7.65	7.65	29.91	29.91	29.92	81.3	81.0	81.4	5.56	5.53	5.56	4.82	4.78	4.89	3	
5/8/2015	9:56	Fine	Middle	2.5	26.30	26.30	26.35	8.26	8.26	8.26	30.39	30.39	30.39	72.3	71.7	71.6	4.91	4.87	4.87	4.80	4.68	4.71	4	4.50
	9:58		Middle	2.5	26.40	26.40	26.35	8.26	8.26	8.26	30.39	30.39	30.39	71.4	71.1	71.6	4.85	4.83	4.87	4.68	4.67	4.71	5	
7/8/2015	11:02	Fine	Middle	2.5	27.60	27.60	27.50	8.27	8.27	8.28	30.43	30.43	30.43	78.2	76.0	74.6	5.22	5.08	4.98	6.29	6.32	6.20	7	7.50
	11:04		Middle	2.5	27.40	27.40	27.50	8.29	8.29	8.28	30.42	30.42	30.43	73.1	71.1	74.6	4.88	4.75	4.98	6.20	6.00	6.20	8	
10/8/2015	15:56	Cloudy	Middle	2.5	26.70	26.70	26.75	8.40	8.40	8.40	31.15	31.15	31.15	86.1	85.5	84.8	5.79	5.77	5.70	5.39	5.55	5.52	6	6.00
	15:58		Middle	2.5	26.80	26.80	26.75	8.40	8.40	8.40	31.15	31.15	31.15	84.7	82.8	84.8	5.69	5.56	5.70	5.55	5.57	5.52	6	
12/8/2015	17:08	Fine	Middle	2.5	27.10	27.10	27.20	8.32	8.32	8.33	31.53	31.53	31.43	78.5	78.4	78.5	5.22	5.22	5.22	5.41	5.38	5.53	9	8.50
	17:10		Middle	2.5	27.30	27.30	27.20	8.33	8.33	8.33	31.33	31.33	31.43	78.6	78.3	78.5	5.23	5.21	5.22	5.62	5.71	5.53	8	
14/8/2015	17:12	Cloudy	Middle	2.5	26.50	26.40	26.48	8.25	8.25	8.26	30.36	30.36	30.36	73.3	75.2	75.0	4.97	5.10	5.09	4.74	4.71	4.74	6	5.50
	17:14		Middle	2.5	26.50	26.50	26.48	8.26	8.26	8.26	30.36	30.36	30.36	75.7	75.8	75.0	5.14	5.14	5.09	4.74	4.77	4.74	5	
17/8/2015	9:00	Fine	Middle	3.0	26.00	26.00	26.05	8.20	8.20	8.23	30.83	30.83	30.83	73.2	73.3	73.6	4.99	4.99	5.01	4.49	7.47	5.19	3	3.50
	9:02		Middle	3.0	26.10	26.10	26.05	8.30	8.20	8.23	30.83	30.83	30.83	74.2	73.5	73.6	5.06	5.00	5.01	4.41	4.40	5.19	4	
19/8/2015	8:57	Fine	Middle	2.5	25.90	25.90	26.00	8.17	8.17	8.17	31.16	31.16	31.16	69.2	68.4	68.3	4.71	4.65	4.65	4.15	4.04	4.06	7	6.50
	8:59		Middle	2.5	26.10	26.10	26.00	8.17	8.17	8.17	31.15	31.15	31.16	68.0	67.7	68.3	4.62	4.60	4.65	4.03	4.02	4.06	6	
21/8/2015	8:54	Fine	Middle	2.5	26.30	26.30	26.30	8.18	8.18	8.18	31.13	31.13	31.13	65.6	67.1	67.6	4.44	4.54	4.58	3.20	3.22	3.20	3	3.50
	8:56		Middle	2.5	26.30	26.30	26.30	8.18	8.18	8.18	31.12	31.12	31.13	68.3	69.4	67.6	4.62	4.70	4.58	3.22	3.15	3.20	4	
25/8/2015	15:59	Fine	Middle	2.5	26.30	26.30	26.35	8.31	8.31	8.32	32.26	32.26	32.28	74.8	74.2	74.0	5.02	4.98	4.97	5.76	5.76	5.76	8	8.00
	16:01		Middle	2.5	26.40	26.40	26.35	8.32	8.32	8.32	32.30	32.30	32.28	73.8	73.3	74.0	4.96	4.92	4.97	5.76	5.76	5.76	8	
27/8/2015	16:30	Fine	Middle	2.5	26.90	26.90	26.95	8.22	8.22	8.23	32.42	32.42	32.43	75.8	76.3	76.2	5.04	5.07	5.05	6.80	6.88	6.86	9	9.50
	16:32		Middle	2.5	27.00	27.00	26.95	8.23	8.23	8.23	32.43	32.43	32.43	76.4	76.1	76.2	5.08	4.99	5.05	6.88	6.89	6.86	10	

Remarks:
Single underline denotes exceedance over Action Level.
Double underline denotes exceedance over Limit Level.



**Water Monitoring Result at RW21-P789 - Sun Hung Kai Centre
Mid-Flood Tide**

Date	Time	Weather Condition	Sampling Depth		Water Temperature		pH			Salinity		DO Saturation		DO		Turbidity		Suspended Solids						
					°C		-		ppt		%		mg/L		NTU		mg/L							
			m	Value	Average	Value	Average	Value	Average	Value	Average	Value	Average	Value	Average	Value	Average	Value	Average					
28/7/2015	16:31	Fine	Middle	3.5	27.40	27.40	27.45	8.17	8.07	8.12	26.57	26.57	26.56	65.7	66.7	66.3	4.50	4.53	4.51	2.21	2.20	2.22	5	4.00
	16:33		Middle	3.5	27.50	27.50		8.17	8.07		26.54	26.54		66.8	66.0		4.54	4.48		2.21	2.24		3	
30/7/2015	17:08	Cloudy	Middle	3.5	26.70	26.70	26.75	8.36	8.36	8.38	26.93	26.93	26.93	86.8	86.9	85.3	5.97	5.98	5.87	3.39	3.43	3.43	6	7.00
	17:10		Middle	3.5	26.80	26.80		8.40	8.40		26.93	26.93		84.3	83.0		5.80	5.71		3.44	3.46		8	
1/8/2015	21:05	Fine	Middle	3.5	25.61	25.62	25.62	7.44	7.44	7.45	29.50	29.50	29.50	80.0	80.1	80.2	5.63	5.64	5.64	2.21	2.23	2.17	4	4.00
	21:06		Middle	3.5	25.62	25.62		7.46	7.46		29.50	29.50		80.4	80.2		5.66	5.64		2.14	2.10		4	
3/8/2015	20:10	Fine	Middle	2.0	26.36	26.36	26.37	7.55	7.55	7.56	28.72	28.72	28.72	92.1	91.6	91.7	6.32	6.28	6.29	2.99	2.95	2.97	4	3.50
	20:11		Middle	2.0	26.38	26.38		7.56	7.56		28.71	28.71		91.3	91.8		6.26	6.29		3.01	2.94		3	
5/8/2015	10:08	Fine	Middle	3.5	26.00	26.00	26.10	8.25	8.25	8.26	30.04	30.04	30.02	77.2	75.4	75.6	5.28	5.15	5.17	2.56	2.53	2.53	2	2.50
	10:10		Middle	3.5	26.20	26.20		8.26	8.26		30.00	30.00		74.7	74.9		5.11	5.12		2.51	2.52		3	
7/8/2015	11:20	Fine	Middle	3.5	27.10	27.10	27.20	8.29	8.29	8.31	29.94	29.94	29.91	86.9	86.8	86.4	5.84	5.83	5.79	3.99	3.99	3.99	6	5.50
	11:22		Middle	3.5	27.30	27.30		8.32	8.32		29.88	29.88		85.9	85.9		5.76	5.73		3.99	4.00		5	
10/8/2015	16:02	Cloudy	Middle	3.0	26.40	26.40	26.45	8.40	8.40	8.40	30.91	30.91	30.91	86.1	86.4	85.9	5.32	5.34	5.29	3.87	3.91	3.93	7	6.50
	16:04		Middle	3.0	26.50	26.50		8.40	8.40		30.91	30.91		86.2	84.8		5.32	5.17		3.95	3.98		6	
12/8/2015	17:40	Fine	Middle	3.5	26.80	26.80	26.85	8.29	8.29	8.31	31.23	31.23	31.22	83.2	83.5	82.7	5.58	5.60	5.55	4.92	4.56	4.65	8	7.50
	17:42		Middle	3.5	26.90	26.90		8.33	8.33		31.20	31.20		82.8	81.4		5.55	5.46		4.56	4.55		7	
14/8/2015	21:04	Cloudy	Middle	2.5	25.40	25.40	25.40	8.23	8.23	8.23	30.44	30.44	30.44	68.2	68.6	68.2	4.74	4.74	4.72	6.02	6.01	5.99	6	6.00
	21:05		Middle	2.5	25.40	25.40		8.23	8.23		30.44	30.44		68.0	67.9		4.70	4.69		5.98	5.94		6	
17/8/2015	9:20	Fine	Middle	3.5	26.00	26.00	26.10	8.20	8.20	8.19	30.77	30.77	30.77	68.0	68.4	68.3	4.64	4.65	4.65	3.56	3.53	3.56	4	4.00
	9:22		Middle	3.5	26.20	26.20		8.18	8.18		30.77	30.77		67.9	68.8		4.62	4.68		3.52	3.63		4	
19/8/2015	9:10	Fine	Middle	3.5	26.10	26.10	26.15	8.17	8.17	8.17	30.71	30.71	30.70	72.6	70.3	69.4	4.94	4.79	4.72	3.75	3.75	3.76	7	7.50
	9:12		Middle	3.5	26.20	26.20		8.17	8.17		30.68	30.68		68.1	66.6		4.63	4.53		3.75	3.77		8	
21/8/2015	9:05	Fine	Middle	3.5	26.20	26.20	26.25	8.18	8.18	8.19	31.05	31.05	31.05	72.3	71.9	71.1	4.90	4.87	4.82	3.81	3.81	3.82	3	3.00
	9:07		Middle	3.5	26.30	26.30		8.19	8.19		31.04	31.04		70.6	69.5		4.79	4.71		3.82	3.83		3	
25/8/2015	16:13	Fine	Middle	3.5	26.70	26.70	26.80	8.28	8.28	8.29	32.20	32.20	32.22	77.7	76.1	76.2	5.18	5.07	5.07	4.56	4.62	4.63	9	9.50
	16:15		Middle	3.5	26.90	26.90		8.30	8.30		32.24	32.24		75.8	75.0		5.05	4.99		4.66	4.67		10	
27/8/2015	16:50	Fine	Middle	3.5	26.70	26.70	26.80	8.24	8.24	8.25	32.42	32.42	32.42	79.0	79.4	78.8	5.27	5.29	5.25	8.55	8.45	8.47	12	12.50
	16:52		Middle	3.5	26.90	26.90		8.25	8.25		32.42	32.42		78.5	78.4		5.23	5.22		8.44	8.44		13	

Remarks:
Single underline denotes exceedance over Action Level.
Double underline denotes exceedance over Limit Level.



**Water Monitoring Result at WSD19 - Sheung Wan
Mid-Flood Tide**

Date	Time	Weather Condition	Sampling Depth		Water Temperature			pH			Salinity		DO Saturation		DO		Turbidity		Suspended Solids					
					°C		-		ppt		%		mg/L		NTU		mg/L							
			m	Value	Average	Value	Average	Value	Average	Value	Average	Value	Average	Value	Average	Value	Average	Value	Average					
28/7/2015	15:21	Fine	Middle	3.5	28.70	28.70	28.40	8.27	8.27	8.25	26.30	26.30	26.26	76.3	75.1	74.5	5.09	5.01	4.97	2.55	2.53	2.53	5	5.00
	15:23		Middle	3.5	28.10	28.10		8.23	8.23		26.22	26.22		73.7	73.0		4.91	4.86		2.52	2.52		5	
30/7/2015	16:04	Cloudy	Middle	3.5	27.00	27.00	27.10	8.34	8.34	8.34	27.58	27.58	27.57	74.2	73.1	71.9	5.06	4.95	4.89	3.88	3.22	3.58	8	8.50
	16:06		Middle	3.5	27.20	27.20		8.33	8.33		27.55	27.55		70.7	69.4		4.81	4.72		3.35	3.86		9	
1/8/2015	18:52	Fine	Middle	3.0	26.22	26.22	26.22	7.73	7.73	7.72	29.00	29.00	29.01	96.4	96.1	96.1	6.73	6.70	6.71	2.61	2.70	2.58	5	4.50
	18:53		Middle	3.0	26.22	26.22		7.70	7.73		29.01	29.01		96.5	95.4		6.73	6.66		2.57	2.45		4	
3/8/2015	20:50	Fine	Middle	2.5	26.04	26.04	26.06	7.28	7.29	7.30	29.40	29.40	29.40	98.7	98.7	98.6	6.77	6.77	6.77	4.36	4.83	4.40	2	2.00
	20:51		Middle	2.5	26.08	26.08		7.31	7.31		29.39	29.39		98.6	98.4		6.77	6.75		4.26	4.14		2	
5/8/2015	8:40	Fine	Middle	3.5	26.50	26.50	26.55	8.23	8.23	8.23	29.33	29.33	29.33	65.0	65.0	63.5	4.44	4.45	4.33	3.53	3.52	3.52	4	4.00
	8:42		Middle	3.5	26.60	26.60		8.22	8.22		29.33	29.33		62.4	61.4		4.25	4.18		3.52	3.51		4	
7/8/2015	9:54	Fine	Middle	3.5	28.60	28.60	28.70	8.37	8.37	8.37	29.30	29.30	29.28	81.7	82.1	80.8	5.37	5.40	5.31	3.64	3.69	3.70	9	9.00
	9:56		Middle	3.5	28.80	28.80		8.36	8.36		29.26	29.26		80.3	79.1		5.27	5.20		3.72	3.73		9	
10/8/2015	14:40	Cloudy	Middle	3.0	26.90	26.90	27.00	8.36	8.36	8.40	30.70	30.70	30.70	98.6	98.7	98.8	6.62	6.62	6.62	5.95	5.77	5.81	9	8.00
	14:42		Middle	3.0	27.10	27.10		8.44	8.44		30.70	30.70		99.7	98.0		6.68	6.57		5.76	5.76		7	
12/8/2015	16:10	Fine	Middle	3.5	28.60	28.60	28.50	8.29	8.29	8.31	30.72	30.72	30.72	83.2	81.4	80.8	5.45	5.32	5.29	5.19	5.21	5.12	7	7.00
	16:12		Middle	3.5	28.40	28.40		8.32	8.32		30.71	30.71		79.7	79.0		5.21	5.17		5.14	4.95		7	
14/8/2015	20:10	Cloudy	Middle	2.5	25.40	25.40	25.40	8.12	8.12	8.13	30.49	30.49	30.50	75.0	74.8	73.6	5.17	5.16	5.07	4.24	4.22	4.20	5	5.00
	20:11		Middle	2.5	25.40	25.40		8.14	8.14		30.50	30.50		71.8	72.8		4.91	5.02		4.20	4.14		5	
17/8/2015	7:05	Fine	Middle	3.5	25.60	25.60	25.70	8.20	8.20	8.19	31.29	31.29	31.29	62.2	61.0	60.4	4.15	4.16	4.10	8.32	8.28	8.31	8	8.00
	7:07		Middle	3.5	25.80	25.80		8.17	8.17		31.29	31.29		58.9	59.5		4.02	4.06		8.29	8.36		8	
19/8/2015	8:18	Fine	Middle	3.5	26.90	26.90	26.95	8.24	8.24	8.23	29.77	29.77	29.78	61.5	62.1	61.3	4.15	4.19	4.13	3.87	3.87	3.87	5	5.00
	8:20		Middle	3.5	27.00	27.00		8.21	8.21		29.78	29.78		61.4	60.0		4.14	4.03		3.87	3.88		5	
21/8/2015	7:53	Fine	Middle	3.5	26.60	26.60	26.65	8.26	8.26	8.26	30.27	30.27	30.27	60.0	59.6	59.3	4.06	4.03	4.01	7.03	6.97	7.04	3	3.00
	7:55		Middle	3.5	26.70	26.70		8.25	8.25		30.26	30.26		59.0	58.5		3.99	3.95		7.00	7.16		3	
25/8/2015	15:05	Fine	Middle	3.5	27.70	27.70	27.80	8.39	8.39	8.38	32.51	32.51	32.52	70.7	70.0	71.0	4.63	4.57	4.64	7.76	7.63	7.61	12	12.50
	15:07		Middle	3.5	27.90	27.90		8.37	8.37		32.53	32.53		70.7	72.6		4.62	4.75		7.51	7.53		13	
27/8/2015	15:21	Fine	Middle	3.5	27.00	27.00	27.15	8.27	8.27	8.27	32.62	32.62	32.58	64.1	64.2	63.7	4.24	4.25	4.21	8.72	8.89	8.88	8	8.00
	15:23		Middle	3.5	27.30	27.30		8.26	8.26		32.54	32.54		63.6	62.8		4.21	4.15		8.99	8.91		8	

Remarks:
Single underline denotes exceedance over Action Level.
Double underline denotes exceedance over Limit Level.



**Water Monitoring Result at C7 - Windsor House
Mid-Ebb Tide**

Date	Time	Weather Condition	Sampling Depth		Water Temperature		pH		Salinity		DO Saturation		DO		Turbidity		Suspended Solids							
					°C		-		ppt		%		mg/L		NTU		mg/L							
					Value	Average	Value	Average	Value	Average	Value	Average	Value	Average	Value	Average	Value	Average						
28/7/2015	-	Fine	Middle	-	-	-	-	-	-	-	-	-	-	-	-	-	-	-	-					
	-		Middle	-	-	-	-	-	-	-	-	-	-	-	-	-	-	-	-					
30/7/2015	11:43	Fine	Middle	-	27.50	27.50	27.55	8.19	8.19	8.19	28.07	28.07	28.07	69.7	72.5	71.9	4.70	4.89	4.85	1.88	1.84	1.85	4	3.50
	11:45		Middle	-	27.60	27.60	27.55	8.19	8.19	8.19	28.07	28.07	28.07	72.6	72.9	71.9	4.89	4.92	4.85	1.82	1.85	1.85	3	3.50
1/8/2015	15:05	Fine	Middle	-	28.20	28.20	28.45	8.23	8.23	8.19	29.52	29.52	29.50	72.6	71.7	71.7	4.79	4.73	4.73	1.64	1.64	1.58	3	3.50
	15:07		Middle	-	28.70	28.70	28.45	8.15	8.15	8.19	29.48	29.48	29.50	71.0	71.4	71.7	4.68	4.70	4.73	1.53	1.52	1.58	4	3.50
3/8/2015	15:20	Fine	Middle	-	27.60	27.60	27.80	8.12	8.12	8.13	20.46	20.46	18.90	76.9	77.0	76.3	5.55	5.52	5.45	1.84	1.80	1.80	3	3.00
	15:22		Middle	-	28.00	28.00	27.80	8.13	8.13	8.13	16.64	18.02	18.90	75.0	76.2	76.3	5.36	5.37	5.45	1.79	1.78	1.80	3	3.00
5/8/2015	16:15	Fine	Middle	-	27.90	27.90	28.10	8.23	8.23	8.22	29.93	29.93	29.93	74.6	73.8	74.3	4.93	4.88	4.91	2.30	2.29	2.29	4	3.50
	16:17		Middle	-	28.30	28.30	28.10	8.20	8.20	8.22	29.92	29.92	29.93	74.0	74.8	74.3	4.89	4.94	4.91	2.28	2.27	2.29	3	3.50
7/8/2015	18:20	Sunny	Middle	-	28.10	28.10	28.15	8.25	8.25	8.24	29.99	29.99	29.98	69.2	69.4	68.8	4.57	4.59	4.55	2.75	2.73	2.66	7	7.00
	18:22		Middle	-	28.20	28.20	28.15	8.23	8.23	8.24	29.96	29.96	29.98	68.7	68.0	68.8	4.54	4.49	4.55	2.59	2.58	2.66	7	7.00
10/8/2015	10:25	Cloudy	Middle	-	27.10	27.10	27.10	8.27	8.27	8.28	30.25	30.25	30.27	80.9	81.8	81.2	5.43	5.47	5.45	2.20	2.25	2.24	7	7.50
	10:27		Middle	-	27.10	27.10	27.10	8.28	8.28	8.28	30.28	30.28	30.27	80.9	81.2	81.2	5.43	5.45	5.45	2.26	2.26	2.24	8	7.50
12/8/2015	11:45	Sunny	Middle	-	27.40	27.40	27.45	8.17	8.17	8.17	31.15	31.15	31.15	65.8	68.4	68.1	4.44	4.54	4.54	8.15	8.07	8.04	4	4.50
	11:47		Middle	-	27.50	27.50	27.45	8.16	8.16	8.17	31.15	31.15	31.15	68.9	69.2	68.1	4.57	4.59	4.54	8.00	7.92	8.04	5	4.50
14/8/2015	13:58	Cloudy	Middle	-	26.70	26.70	26.75	8.17	8.17	8.16	30.11	30.11	30.10	68.6	68.8	67.6	4.61	4.65	4.56	2.51	2.51	2.49	6	5.50
	14:00		Middle	-	26.80	26.80	26.75	8.15	8.15	8.16	30.09	30.09	30.10	67.8	65.2	67.6	4.58	4.40	4.56	2.56	2.37	2.49	5	5.50
17/8/2015	11:35	Fine	Middle	-	26.50	26.50	26.70	8.13	8.13	8.13	30.38	30.38	30.38	68.0	68.1	67.9	4.59	4.59	4.58	2.76	2.75	2.77	4	4.00
	11:37		Middle	-	26.90	26.90	26.70	8.12	8.12	8.13	30.38	30.38	30.38	68.0	67.5	67.9	4.58	4.55	4.58	2.77	2.78	2.77	4	4.00
19/8/2015	15:30	Sunny	Middle	-	28.20	28.20	28.30	8.05	8.05	8.06	30.45	30.45	30.45	58.2	58.2	58.7	3.83	3.82	3.86	3.71	3.72	3.70	4	4.00
	15:32		Middle	-	28.40	28.40	28.30	8.06	8.06	8.06	30.44	30.44	30.45	58.7	59.5	58.7	3.86	3.91	3.86	3.65	3.70	3.70	4	4.00
21/8/2015	15:00	Fine	Middle	-	27.80	27.80	27.65	8.11	8.11	8.12	31.47	31.47	31.47	65.5	64.8	63.6	4.35	4.30	4.22	2.73	2.74	2.73	3	3.00
	15:02		Middle	-	27.50	27.50	27.65	8.12	8.12	8.12	31.47	31.47	31.47	63.4	60.8	63.6	4.21	4.03	4.22	2.65	2.79	2.73	3	3.00
25/8/2015	10:00	Fine	Middle	-	27.00	27.00	27.10	8.18	8.18	8.17	32.17	32.17	32.17	75.6	74.8	74.6	5.03	4.97	4.95	2.47	2.46	2.46	7	7.00
	10:02		Middle	-	27.20	27.20	27.10	8.16	8.16	8.17	32.17	32.17	32.17	74.9	72.9	74.6	4.97	4.84	4.95	2.45	2.47	2.46	7	7.00
27/8/2015	11:09	Fine	Middle	-	27.40	27.40	27.50	8.11	8.11	8.11	32.40	32.40	32.40	64.8	64.3	63.6	4.27	4.23	4.19	1.98	1.98	1.98	2	2.50
	11:11		Middle	-	27.60	27.60	27.50	8.11	8.11	8.11	32.39	32.39	32.40	63.5	61.9	63.6	4.18	4.07	4.19	1.98	1.98	1.98	3	2.50

Remarks:
Single underline denotes exceedance over Action Level.
Double underline denotes exceedance over Limit Level.



**Water Monitoring Result at C1 - HKCEC
Mid-Ebb Tide**

Date	Time	Weather Condition	Sampling Depth		Water Temperature			pH			Salinity		DO Saturation		DO		Turbidity		Suspended Solids					
					°C			-			ppt		%		mg/L		NTU		mg/L					
					Value	Average		Value	Average		Value	Average	Value	Average	Value	Average	Value	Average	Value	Average				
28/7/2015	11:40	Fine	Middle	2.5	27.60	27.60	27.65	8.23	8.23	8.23	24.63	24.63	24.48	83.7	83.8	83.9	5.75	5.76	5.76	2.27	2.27	2.27	5	5.00
	11:42		Middle	2.5	27.70	27.70		8.23	8.23		24.32	24.32		84.0	84.0		5.77	5.77		2.26	2.26		5	
30/7/2015	11:00	Fine	Middle	2.5	27.50	27.50	27.55	8.38	8.38	8.38	26.95	26.95	26.95	79.0	80.1	79.5	5.37	5.44	5.40	3.00	3.00	2.99	4	3.50
	11:02		Middle	2.5	27.60	27.60		8.38	8.38		26.94	26.94		79.8	79.0		5.42	5.36		2.97	2.97		3	
1/8/2015	11:00	Fine	Middle	2.5	26.50	26.50	26.55	8.22	8.22	8.22	29.26	29.26	29.26	67.9	69.5	68.7	4.63	4.74	4.69	2.23	2.21	2.21	3	3.50
	11:02		Middle	2.5	26.60	26.60		8.22	8.22		29.26	29.26		69.1	68.4		4.71	4.66		2.20	2.20		4	
3/8/2015	14:30	Fine	Middle	2.5	26.80	26.80	26.80	8.30	8.30	8.30	29.19	29.19	29.20	71.4	71.6	71.8	4.85	4.86	4.87	2.52	2.44	2.47	2	2.00
	14:32		Middle	2.5	26.80	26.80		8.30	8.30		29.20	29.20		71.7	72.3		4.87	4.91		2.45	2.46		2	
5/8/2015	15:14	Fine	Middle	2.5	26.90	26.90	26.95	8.37	8.37	8.37	29.85	29.85	29.85	84.1	81.5	80.0	5.67	5.49	5.42	2.68	2.70	2.66	6	5.00
	15:16		Middle	2.5	27.00	27.00		8.37	8.37		29.85	29.85		76.4	77.9		5.28	5.25		2.70	2.54		4	
7/8/2015	16:58	Sunny	Middle	2.5	28.10	28.10	28.10	8.50	8.50	8.49	30.49	30.49	30.49	97.0	96.7	96.6	6.40	6.38	6.37	3.97	3.87	3.84	4	4.00
	17:00		Middle	2.5	28.10	28.10		8.48	8.48		30.49	30.49		96.0	96.6		6.33	6.37		3.76	3.74		4	
10/8/2015	9:50	Cloudy	Middle	3.0	26.70	26.70	26.70	8.48	8.48	8.48	30.40	30.40	30.40	93.4	93.8	93.2	6.31	6.32	6.29	2.96	2.98	3.00	3	3.50
	9:52		Middle	3.0	26.70	26.70		8.48	8.48		30.40	30.40		92.9	92.7		6.27	6.26		2.99	3.08		4	
12/8/2015	10:54	Sunny	Middle	2.5	26.80	26.80	26.80	8.37	8.37	8.37	30.78	30.78	30.79	76.0	76.1	77.1	5.12	5.12	5.19	3.22	3.23	3.22	6	6.00
	10:56		Middle	2.5	26.80	26.80		8.37	8.37		30.79	30.79		77.1	79.0		5.19	5.32		3.22	3.19		6	
14/8/2015	11:16	Cloudy	Middle	2.5	26.40	26.40	26.40	8.30	8.30	8.30	30.02	30.02	30.02	72.5	73.3	72.3	4.93	4.99	4.92	3.20	3.24	3.08	4	3.50
	11:18		Middle	2.5	26.40	26.40		8.30	8.30		30.02	30.02		72.3	71.2		4.91	4.84		3.00	2.88		3	
17/8/2015	15:35	Fine	Middle	2.5	27.00	27.00	27.10	8.19	8.19	8.19	30.55	30.55	30.55	76.8	77.9	77.8	5.15	5.22	5.22	4.58	4.67	4.66	4	4.00
	15:37		Middle	2.5	27.20	27.20		8.19	8.19		30.55	30.55		78.2	78.4		5.24	5.25		4.70	4.69		4	
19/8/2015	14:25	Sunny	Middle	2.5	27.20	27.20	27.25	8.20	8.20	8.20	30.47	30.47	30.48	77.9	78.0	77.8	5.21	5.22	5.21	2.86	2.79	2.85	5	5.00
	14:27		Middle	2.5	27.30	27.30		8.20	8.20		30.48	30.48		77.2	78.2		5.16	5.25		2.82	2.92		5	
21/8/2015	16:37	Fine	Middle	2.5	26.70	26.70	26.70	8.29	8.29	8.29	31.44	31.44	31.44	72.1	73.0	73.2	4.85	4.91	4.92	3.32	3.27	3.27	3	3.00
	16:39		Middle	2.5	26.70	26.70		8.29	8.29		31.44	31.44		73.6	73.9		4.94	4.97		3.26	3.23		3	
25/8/2015	9:15	Fine	Middle	2.5	25.90	25.90	25.95	8.38	8.38	8.38	32.20	32.20	32.19	77.9	77.1	77.3	5.28	5.22	5.24	4.28	4.28	4.43	6	5.00
	9:17		Middle	2.5	26.00	26.00		8.37	8.37		32.18	32.18		76.6	77.7		5.19	5.26		4.48	4.68		4	
27/8/2015	9:16	Fine	Middle	2.5	26.10	26.10	26.10	8.29	8.29	8.29	32.77	32.77	32.77	66.6	65.2	64.9	4.49	4.39	4.37	6.00	5.95	5.95	8	7.50
	9:18		Middle	2.5	26.10	26.10		8.29	8.29		32.76	32.76		64.3	63.5		4.33	4.26		5.75	6.11		7	

Remarks:
Single underline denotes exceedance over Action Level.
Double underline denotes exceedance over Limit Level.



**Water Monitoring Result at P1 - HKCEC Phase I
Mid-Ebb Tide**

Date	Time	Weather Condition	Sampling Depth		Water Temperature			pH			Salinity		DO Saturation		DO		Turbidity		Suspended Solids					
					°C			-			ppt		%		mg/L		NTU		mg/L					
					Value	Average		Value	Average		Value	Average	Value	Average	Value	Average	Value	Average	Value	Average				
28/7/2015	11:20	Fine	Middle	2.5	28.50	28.50	28.50	8.19	8.19	8.20	24.72	24.72	24.72	91.5	90.1	89.8	6.20	6.11	6.09	1.49	1.34	1.41	4	3.00
	11:22		Middle	2.5	28.50	28.50		8.21	8.21		24.72	24.72		89.5	88.2		6.06	5.97		1.36	1.45		2	
30/7/2015	10:45	Fine	Middle	2.5	28.00	28.00	28.05	8.20	8.20	8.27	26.37	26.37	26.35	83.3	81.4	80.2	5.62	5.48	5.41	2.30	2.32	2.33	4	4.00
	10:47		Middle	2.5	28.10	28.10		8.34	8.34		26.33	26.32		79.1	77.0		5.33	5.19		2.34	2.35		4	
1/8/2015	10:45	Fine	Middle	2.5	27.20	27.20	27.25	8.19	8.19	8.20	29.27	29.27	29.26	72.7	70.6	70.4	4.90	4.75	4.74	1.81	1.81	1.85	3	3.50
	10:47		Middle	2.5	27.30	27.30		8.21	8.21		29.25	29.25		69.1	69.1		4.66	4.65		1.86	1.92		4	
3/8/2015	14:13	Fine	Middle	2.5	27.60	27.60	27.85	8.14	8.14	8.18	29.74	29.74	29.70	73.7	74.7	74.2	4.92	4.98	4.95	2.37	2.37	2.34	3	3.50
	14:15		Middle	2.5	28.10	28.10		8.21	8.21		29.65	29.65		75.0	73.2		5.00	4.88		2.29	2.31		4	
5/8/2015	15:00	Fine	Middle	2.5	27.50	27.50	27.55	8.28	8.28	8.30	29.99	29.99	29.97	74.0	72.8	72.3	4.93	4.86	4.83	2.78	2.76	2.76	4	3.50
	15:02		Middle	2.5	27.60	27.60		8.32	8.32		29.94	29.94		71.8	70.7		4.79	4.72		2.75	2.75		3	
7/8/2015	16:42	Sunny	Middle	2.5	28.60	28.60	28.60	8.39	8.39	8.44	30.10	30.10	30.15	103.5	105.6	104.2	6.72	6.87	6.78	5.22	5.10	5.13	6	6.00
	16:44		Middle	2.5	28.60	28.60		8.48	8.48		30.20	30.20		103.9	103.9		6.76	6.76		5.19	5.00		6	
10/8/2015	9:30	Cloudy	Middle	3.0	27.00	27.00	27.10	8.39	8.39	8.42	30.14	30.14	30.29	99.3	98.7	98.2	6.66	6.61	6.58	3.73	3.73	3.72	5	5.00
	9:32		Middle	3.0	27.20	27.20		8.45	8.45		30.43	30.43		97.1	97.5		6.50	6.53		3.71	3.71		5	
12/8/2015	10:38	Sunny	Middle	2.5	27.50	27.50	27.65	8.29	8.29	8.32	30.73	30.73	30.71	82.2	81.3	81.2	5.46	5.39	5.39	3.39	3.38	3.42	5	5.00
	10:40		Middle	2.5	27.80	27.80		8.34	8.34		30.69	30.69		80.4	80.7		5.34	5.35		3.43	3.48		5	
14/8/2015	11:00	Cloudy	Middle	2.5	26.40	26.40	26.45	8.25	8.25	8.27	30.31	30.31	30.16	71.8	72.6	71.8	4.88	4.94	4.88	3.00	2.99	2.98	7	6.00
	11:02		Middle	2.5	26.50	26.50		8.28	8.28		30.00	30.00		71.8	70.8		4.88	4.81		2.97	2.97		5	
17/8/2015	15:15	Fine	Middle	2.5	29.80	29.80	29.80	8.16	8.16	8.18	30.57	30.57	30.61	87.4	86.3	86.3	5.71	5.62	5.62	4.50	4.67	4.63	5	5.00
	15:17		Middle	2.5	29.80	29.80		8.19	8.19		30.65	30.65		85.7	85.7		5.58	5.58		4.68	4.68		5	
19/8/2015	14:05	Sunny	Middle	2.5	28.80	28.80	28.85	8.08	8.08	8.11	30.75	30.75	30.74	90.4	91.2	89.9	5.89	5.93	5.86	2.70	2.72	2.72	5	4.50
	14:07		Middle	2.5	28.90	28.90		8.13	8.13		30.73	30.73		89.5	88.6		5.82	5.78		2.73	2.74		4	
21/8/2015	16:21	Fine	Middle	2.5	27.70	27.70	27.75	8.19	8.19	8.21	31.48	31.48	31.45	76.4	73.5	73.1	5.04	4.85	4.82	3.27	3.34	3.28	3	3.00
	16:23		Middle	2.5	27.80	27.80		8.23	8.23		31.42	31.42		71.6	70.7		4.73	4.66		3.26	3.25		3	
25/8/2015	8:59	Fine	Middle	2.5	26.40	26.40	26.65	8.19	8.19	8.24	31.89	31.89	31.73	81.8	81.3	80.9	5.49	5.45	5.42	3.63	3.62	3.62	6	6.50
	9:01		Middle	2.5	26.90	26.90		8.29	8.29		31.56	31.56		80.7	79.7		5.40	5.34		3.61	3.60		7	
27/8/2015	9:00	Fine	Middle	2.5	26.60	26.60	26.70	8.24	8.24	8.25	32.81	32.82	32.81	74.8	74.3	74.1	4.99	4.95	4.94	3.87	3.87	3.89	5	4.50
	9:02		Middle	2.5	26.80	26.80		8.26	8.26		32.81	32.81		73.7	73.5		4.91	4.90		3.90	3.93		4	

Remarks:
Single underline denotes exceedance over Action Level.
Double underline denotes exceedance over Limit Level.



**Water Monitoring Result at P3 - APA
Mid-Ebb Tide**

Date	Time	Weather Condition	Sampling Depth		Water Temperature			pH			Salinity		DO Saturation		DO		Turbidity		Suspended Solids					
					°C			-			ppt		%		mg/L		NTU		mg/L					
					Value	Average		Value	Average		Value	Average	Value	Average	Value	Average	Value	Average	Value	Average				
28/7/2015	11:25	Fine	Middle	2.5	28.40	28.40	28.20	8.22	8.22	8.22	23.32	23.32	23.66	86.7	85.3	85.7	5.92	5.84	5.86	1.14	1.03	1.09	4	4.50
	11:27		Middle	2.5	28.00	28.00		8.22	8.22		24.00	24.00		85.7	85.2		5.86	5.83		1.13	1.07		5	
30/7/2015	10:49	Fine	Middle	2.5	27.80	27.80	27.80	8.36	8.36	8.37	26.76	26.76	26.76	84.4	85.1	83.9	5.72	5.77	5.68	2.75	2.75	2.75	4	4.00
	10:51		Middle	2.5	27.80	27.80		8.37	8.37		26.76	26.76		83.3	82.7		5.64	5.60		2.75	2.75		4	
1/8/2015	10:49	Fine	Middle	2.5	26.80	26.80	26.90	8.22	8.22	8.22	29.10	29.10	29.09	68.0	69.5	69.9	4.61	4.71	4.74	2.02	2.01	1.95	2	3.00
	10:51		Middle	2.5	27.00	27.00		8.22	8.22		29.07	29.07		70.8	71.4		4.80	4.84		1.88	1.87		4	
3/8/2015	14:17	Fine	Middle	2.5	27.20	27.20	27.30	8.24	8.24	8.26	29.34	29.33	29.31	76.4	75.2	76.6	5.14	5.05	5.17	2.27	2.37	2.38	2	2.00
	14:19		Middle	2.5	27.40	27.40		8.27	8.27		29.28	29.28		78.0	76.9		5.30	5.17		2.51	2.38		2	
5/8/2015	15:03	Fine	Middle	2.5	27.10	27.10	27.15	8.34	8.34	8.35	29.87	29.87	29.86	74.4	74.0	73.9	5.00	4.98	4.97	2.31	2.32	2.30	4	4.50
	15:05		Middle	2.5	27.20	27.20		8.36	8.36		29.85	29.85		73.6	73.5		4.95	4.94		2.29	2.28		5	
7/8/2015	16:46	Sunny	Middle	2.5	27.90	27.90	27.95	8.52	8.52	8.53	30.22	30.22	30.22	100.8	101.2	102.2	6.66	6.70	6.77	3.86	3.87	3.91	6	6.50
	16:48		Middle	2.5	28.00	28.00		8.54	8.54		30.21	30.21		103.0	103.9		6.82	6.88		4.00	3.90		7	
10/8/2015	9:35	Cloudy	Middle	3.0	26.70	26.70	26.70	8.47	8.47	8.48	30.40	30.40	30.40	95.7	97.5	96.1	6.46	6.58	6.49	3.68	3.69	3.67	5	4.50
	9:37		Middle	3.0	26.70	26.70		8.48	8.48		30.40	30.40		96.2	95.0		6.50	6.41		3.64	3.65		4	
12/8/2015	10:42	Sunny	Middle	2.5	26.80	26.80	26.90	8.36	8.36	8.37	30.74	30.74	30.71	83.5	82.1	82.3	5.61	5.52	5.53	3.64	3.79	3.72	4	5.00
	10:44		Middle	2.5	27.00	27.00		8.37	8.37		30.67	30.67		81.7	81.9		5.49	5.50		3.80	3.65		6	
14/8/2015	11:04	Cloudy	Middle	2.5	26.20	26.20	26.25	8.29	8.29	8.30	30.00	30.00	30.00	74.6	74.2	73.4	5.09	5.06	5.01	2.74	2.74	2.69	5	5.00
	11:06		Middle	2.5	26.30	26.30		8.30	8.30		30.00	30.00		73.0	71.8		4.98	4.90		2.64	2.64		5	
17/8/2015	15:20	Fine	Middle	2.5	27.40	27.40	27.55	8.19	8.19	8.20	30.59	30.59	30.59	81.2	80.9	82.1	5.20	5.18	5.26	5.09	5.28	5.23	4	3.50
	15:22		Middle	2.5	27.70	27.70		8.20	8.20		30.58	30.58		82.9	83.2		5.31	5.34		5.28	5.25		3	
19/8/2015	14:10	Sunny	Middle	2.5	27.90	27.90	28.00	8.16	8.16	8.17	30.39	30.39	30.42	83.8	84.2	84.0	5.54	5.57	5.56	2.37	2.31	2.31	4	4.00
	14:12		Middle	2.5	28.10	28.10		8.18	8.18		30.44	30.44		83.9	84.2		5.54	5.58		2.29	2.28		4	
21/8/2015	16:25	Fine	Middle	2.5	27.00	27.00	27.05	8.26	8.26	8.27	31.37	31.37	31.37	69.6	69.2	69.1	4.65	4.62	4.61	3.25	3.25	3.25	3	2.50
	16:27		Middle	2.5	27.10	27.10		8.27	8.27		31.37	31.37		68.9	68.6		4.60	4.58		3.25	3.26		2	
25/8/2015	9:03	Fine	Middle	2.5	26.20	26.20	26.25	8.33	8.33	8.34	32.17	32.17	32.16	83.3	81.2	81.5	5.61	5.47	5.49	3.61	3.62	3.59	5	6.00
	9:05		Middle	2.5	26.30	26.30		8.35	8.35		32.14	32.14		81.3	80.0		5.47	5.39		3.58	3.54		7	
27/8/2015	9:04	Fine	Middle	2.5	26.10	26.10	26.15	8.27	8.27	8.28	32.80	32.80	32.78	64.7	64.8	65.0	4.36	4.36	4.38	4.21	4.21	4.21	5	5.00
	9:06		Middle	2.5	26.20	26.20		8.28	8.28		32.76	32.76		65.3	65.2		4.40	4.39		4.21	4.21		5	

Remarks:
Single underline denotes exceedance over Action Level.
Double underline denotes exceedance over Limit Level.



**Water Monitoring Result at P4 - SOC
Mid-Ebb Tide**

Date	Time	Weather Condition	Sampling Depth		Water Temperature			pH			Salinity		DO Saturation		DO		Turbidity		Suspended Solids					
					°C			-			ppt		%		mg/L		NTU		mg/L					
					Value	Average		Value	Average		Value	Average	Value	Average	Value	Average	Value	Average	Value	Average				
28/7/2015	11:30	Fine	Middle	2.5	27.80	27.80	27.85	8.23	8.23	8.23	24.12	24.12	24.12	87.0	86.4	86.5	5.93	5.90	5.91	0.99	0.99	0.99	5	5.50
	11:32		Middle	2.5	27.90	27.90		8.23	8.23		24.12	24.12		86.5	86.1		5.91	5.89		1.00	0.97		6	
30/7/2015	10:53	Fine	Middle	2.5	27.50	27.50	27.50	8.38	8.38	8.39	26.76	26.76	26.76	79.0	79.4	78.9	5.38	5.41	5.37	2.07	2.03	2.03	2	2.50
	10:55		Middle	2.5	27.50	27.50		8.39	8.39		26.75	26.75		79.1	78.2		5.38	5.32		2.01	2.00		3	
1/8/2015	10:52	Fine	Middle	2.5	26.50	26.50	26.60	8.22	8.22	8.22	25.37	25.37	25.08	73.2	74.5	74.1	5.09	5.18	5.16	1.79	1.78	1.79	3	3.00
	10:54		Middle	2.5	26.70	26.70		8.22	8.22		24.78	24.78		74.4	74.4		5.18	5.17		1.79	1.80		3	
3/8/2015	14:22	Fine	Middle	2.5	26.80	26.80	26.85	8.28	8.28	8.29	29.32	29.32	29.32	73.2	75.7	74.4	4.96	5.13	5.03	2.64	3.00	2.77	4	4.50
	14:24		Middle	2.5	26.90	26.90		8.29	8.29		29.31	29.31		75.0	73.5		5.03	4.98		2.74	2.68		5	
5/8/2015	15:06	Fine	Middle	2.5	27.10	27.10	27.10	8.37	8.37	8.37	29.33	29.33	29.33	76.3	79.1	79.3	5.14	5.32	5.34	2.19	2.21	2.21	5	4.50
	15:08		Middle	2.5	27.10	27.10		8.37	8.37		29.33	29.33		81.1	80.5		5.46	5.42		2.21	2.21		4	
7/8/2015	16:50	Sunny	Middle	2.5	28.00	28.00	28.05	8.52	8.52	8.52	30.33	30.33	30.33	99.0	98.3	97.7	6.54	6.49	6.45	4.28	4.22	4.21	6	6.50
	16:52		Middle	2.5	28.10	28.10		8.51	8.51		30.32	30.32		97.4	96.1		6.43	6.34		4.10	4.22		7	
10/8/2015	9:40	Cloudy	Middle	3.0	26.70	26.70	26.75	8.48	8.48	8.48	30.37	30.37	30.38	96.0	96.1	95.9	6.48	6.49	6.47	3.55	3.54	3.53	4	3.50
	9:42		Middle	3.0	26.80	26.80		8.48	8.48		30.39	30.39		96.3	95.0		6.50	6.41		3.52	3.52		3	
12/8/2015	10:46	Sunny	Middle	2.5	27.00	27.00	27.05	8.37	8.37	8.37	30.70	30.70	30.70	78.7	78.0	77.2	5.27	5.23	5.17	3.74	3.73	3.73	6	5.50
	10:48		Middle	2.5	27.10	27.10		8.36	8.36		30.70	30.70		76.9	75.0		5.15	5.03		3.72	3.73		5	
14/8/2015	11:08	Cloudy	Middle	2.5	26.20	26.20	26.20	8.30	8.30	8.30	30.00	30.00	30.00	78.8	77.9	76.4	5.38	5.32	5.22	3.52	3.52	3.43	4	4.00
	11:10		Middle	2.5	26.20	26.20		8.30	8.30		30.00	30.00		74.9	74.0		5.11	5.05		3.36	3.32		4	
17/8/2015	15:25	Fine	Middle	2.5	27.50	27.50	27.60	8.19	8.19	8.19	30.54	30.54	30.55	84.6	84.0	84.3	5.43	5.40	5.42	4.29	4.29	4.27	4	4.50
	15:27		Middle	2.5	27.70	27.70		8.19	8.19		30.56	30.56		84.2	84.5		5.42	5.44		4.26	4.23		5	
19/8/2015	14:15	Sunny	Middle	2.5	27.80	27.80	27.90	8.19	8.19	8.20	30.38	30.38	30.39	84.9	84.7	84.8	5.62	5.61	5.62	2.74	2.74	2.74	4	5.00
	14:17		Middle	2.5	28.00	28.00		8.20	8.20		30.39	30.39		84.9	84.7		5.62	5.61		2.74	2.75		6	
21/8/2015	16:29	Fine	Middle	2.5	26.80	26.80	26.85	8.27	8.27	8.27	31.38	31.38	31.38	73.8	73.3	73.6	4.94	4.91	4.93	2.25	2.27	2.21	3	3.00
	16:31		Middle	2.5	26.90	26.90		8.27	8.27		31.37	31.37		73.1	74.0		4.90	4.96		2.16	2.15		3	
25/8/2015	9:07	Fine	Middle	2.5	26.20	26.20	26.25	8.36	8.36	8.36	32.15	32.15	32.15	80.7	79.7	80.9	5.43	5.37	5.44	3.50	3.52	3.52	8	8.00
	9:09		Middle	2.5	26.30	26.30		8.36	8.36		32.14	32.14		82.7	80.3		5.57	5.40		3.52	3.52		8	
27/8/2015	9:08	Fine	Middle	2.5	26.20	26.20	26.15	8.28	8.28	8.28	32.74	32.74	32.75	72.4	70.0	70.8	4.88	4.71	4.77	3.37	3.41	3.47	6	5.50
	9:10		Middle	2.5	26.10	26.10		8.28	8.28		32.76	32.76		70.0	70.6		4.72	4.76		3.46	3.63		5	

Remarks:
Single underline denotes exceedance over Action Level.
Double underline denotes exceedance over Limit Level.



**Water Monitoring Result at P5 - WCT / RT / IT
Mid-Ebb Tide**

Date	Time	Weather Condition	Sampling Depth		Water Temperature			pH			Salinity		DO Saturation		DO		Turbidity		Suspended Solids					
					°C			-			ppt		%		mg/L		NTU		mg/L					
					Value	Average		Value	Average		Value	Average	Value	Average	Value	Average	Value	Average	Value	Average				
28/7/2015	11:35	Fine	Middle	2.5	27.60	27.60	27.65	8.23	8.23	8.23	24.59	24.59	24.49	84.5	85.7	85.2	5.80	5.88	5.85	1.64	1.64	1.65	5	4.50
	11:37		Middle	2.5	27.70	27.70		8.23	8.23		24.39	24.39		85.8	84.9		5.89	5.82		1.67	1.65		4	
30/7/2015	10:56	Fine	Middle	2.5	27.30	27.30	27.35	8.39	8.39	8.39	26.34	26.34	26.33	81.6	80.9	80.1	5.56	5.51	5.46	2.77	2.75	2.75	2	3.00
	10:58		Middle	2.5	27.40	27.40		8.39	8.39		26.31	26.31		80.0	78.0		5.45	5.31		2.74	2.74		4	
1/8/2015	10:55	Fine	Middle	2.5	26.40	26.40	26.45	8.22	8.22	8.22	29.22	29.22	29.22	69.5	68.0	67.2	4.74	4.63	4.58	2.30	2.29	2.28	2	2.50
	10:57		Middle	2.5	26.50	26.50		8.22	8.22		29.22	29.22		66.4	64.8		4.53	4.42		2.27	2.27		3	
3/8/2015	14:26	Fine	Middle	2.5	26.70	26.70	26.75	8.29	8.29	8.29	29.23	29.23	29.22	78.2	77.8	77.8	5.31	5.28	5.28	2.72	2.73	2.66	4	4.50
	14:28		Middle	2.5	26.80	26.80		8.29	8.29		29.21	29.21		77.8	77.3		5.28	5.25		2.64	2.55		5	
5/8/2015	15:10	Fine	Middle	2.5	26.90	26.90	26.95	8.37	8.37	8.38	29.84	29.84	29.84	78.3	78.0	78.9	5.28	5.26	5.32	2.79	2.83	2.81	5	4.50
	15:12		Middle	2.5	27.00	27.00		8.38	8.38		29.84	29.84		80.1	79.1		5.40	5.33		2.82	2.80		4	
7/8/2015	16:54	Sunny	Middle	2.5	27.70	27.70	27.75	8.51	8.51	8.51	30.43	30.43	30.42	100.0	99.9	99.9	6.63	6.63	6.63	4.01	3.85	3.95	7	7.00
	16:56		Middle	2.5	27.80	27.80		8.51	8.51		30.40	30.40		100.0	99.7		6.63	6.61		3.95	3.97		7	
10/8/2015	9:45	Cloudy	Middle	3.0	26.70	26.70	26.70	8.48	8.48	8.49	30.40	30.40	30.40	96.4	97.1	96.2	6.51	6.56	6.50	3.86	3.85	3.83	5	6.00
	9:47		Middle	3.0	26.70	26.70		8.49	8.49		30.40	30.40		95.6	95.5		6.46	6.45		3.81	3.78		7	
12/8/2015	10:50	Sunny	Middle	2.5	26.80	26.80	26.85	8.37	8.37	8.37	30.72	30.72	30.72	79.2	79.9	79.5	5.33	5.37	5.34	3.79	3.83	3.82	7	6.50
	10:52		Middle	2.5	26.90	26.90		8.37	8.37		30.71	30.71		79.2	79.5		5.32	5.34		3.78	3.87		6	
14/8/2015	11:12	Cloudy	Middle	2.5	26.40	26.40	26.45	8.30	8.30	8.30	30.05	30.05	30.06	72.3	71.4	70.5	4.91	4.85	4.79	3.85	3.97	3.74	5	5.00
	11:14		Middle	2.5	26.50	26.50		8.30	8.30		30.07	30.07		69.3	68.8		4.71	4.67		3.76	3.38		5	
17/8/2015	15:30	Fine	Middle	2.5	27.00	27.00	27.10	8.19	8.19	8.19	30.55	30.55	30.56	76.0	76.1	76.1	5.10	5.11	5.11	4.56	4.67	4.70	5	5.50
	15:32		Middle	2.5	27.20	27.20		8.19	8.19		30.57	30.57		76.0	76.3		5.10	5.12		4.81	4.75		6	
19/8/2015	14:20	Sunny	Middle	2.5	27.60	27.60	27.65	8.20	8.20	8.20	30.40	30.40	30.40	82.8	81.9	81.9	5.51	5.54	5.47	3.23	3.23	3.24	4	4.50
	14:22		Middle	2.5	27.70	27.70		8.20	8.20		30.40	30.40		81.7	81.2		5.43	5.40		3.24	3.24		5	
21/8/2015	16:33	Fine	Middle	2.5	26.60	26.60	26.60	8.28	8.28	8.28	31.42	31.42	31.42	73.4	72.7	73.5	4.94	4.89	4.94	3.97	4.02	3.94	5	4.00
	16:35		Middle	2.5	26.60	26.60		8.28	8.28		31.42	31.42		73.3	74.4		4.93	5.00		4.01	3.76		3	
25/8/2015	9:11	Fine	Middle	2.5	26.00	26.00	26.05	8.37	8.37	8.37	32.14	32.14	32.16	81.0	78.2	77.7	5.48	5.29	5.25	4.15	4.01	4.05	9	8.50
	9:13		Middle	2.5	26.10	26.10		8.37	8.37		32.17	32.17		76.3	75.2		5.16	5.08		4.02	4.00		8	
27/8/2015	9:12	Fine	Middle	2.5	26.20	26.20	26.18	8.28	8.28	8.28	32.77	32.77	32.77	71.2	69.6	69.4	4.78	4.67	4.66	4.68	4.68	4.71	5	5.50
	9:14		Middle	2.5	26.00	26.30		8.28	8.28		32.77	32.77		69.0	67.9		4.64	4.53		4.73	4.75		6	

Remarks:
Single underline denotes exceedance over Action Level.
Double underline denotes exceedance over Limit Level.



**Water Monitoring Result at RW21-P789 - Sun Hung Kai Centre
Mid-Ebb Tide**

Date	Time	Weather Condition	Sampling Depth		Water Temperature		pH			Salinity		DO Saturation		DO		Turbidity		Suspended Solids						
					°C		-		ppt		%		mg/L		NTU		mg/L							
					Value	Average	Value	Average	Value	Average	Value	Average	Value	Average	Value	Average	Value	Average	Value	Average				
28/7/2015	8:35	Fine	Middle	3.5	27.10	27.10	27.15	7.96	7.96	7.98	26.36	26.36	26.36	77.2	76.9	76.7	5.29	5.28	5.26	1.32	1.30	1.29	4	3.50
	8:37		Middle	3.5	27.20	27.20		7.99	7.99		26.36	26.36		77.3	75.3		5.30	5.16		1.28	1.26		3	
30/7/2015	11:17	Fine	Middle	3.5	26.80	26.80	26.95	8.33	8.33	8.34	27.61	27.61	27.59	83.3	78.7	79.7	5.49	5.38	5.42	4.20	4.07	4.08	9	9.50
	11:19		Middle	3.5	27.10	27.10		8.34	8.34		27.57	27.57		77.5	79.1		5.38	5.41		4.03	4.01		10	
1/8/2015	11:19	Fine	Middle	3.5	26.20	26.20	26.25	8.15	8.15	8.17	30.45	30.45	30.43	72.1	74.9	74.1	4.90	5.09	5.03	2.35	2.43	2.40	4	4.00
	11:21		Middle	3.5	26.30	26.30		8.18	8.18		30.41	30.41		75.2	74.0		5.11	5.03		2.44	2.37		4	
3/8/2015	14:54	Fine	Middle	3.5	26.60	26.60	26.65	8.22	8.22	8.23	29.98	29.98	29.96	72.3	71.5	71.7	4.90	4.85	4.86	3.14	3.11	3.09	3	3.50
	14:56		Middle	3.5	26.70	26.70		8.24	8.24		29.93	29.93		71.4	71.7		4.84	4.83		3.07	3.05		4	
5/8/2015	15:32	Fine	Middle	3.5	26.80	26.80	26.90	8.34	8.34	8.36	30.20	30.20	30.18	78.9	78.9	81.5	5.31	5.31	5.47	2.98	2.98	2.90	5	5.00
	15:34		Middle	3.5	27.00	27.00		8.37	8.37		30.15	30.15		86.2	82.0		5.75	5.52		2.87	2.77		5	
7/8/2015	17:10	Sunny	Middle	3.5	27.50	27.50	27.60	8.47	8.47	8.48	30.51	30.51	30.50	95.3	94.2	93.9	6.34	6.26	6.24	4.30	4.30	4.22	7	6.50
	17:12		Middle	3.5	27.70	27.70		8.48	8.48		30.49	30.49		92.4	93.8		6.14	6.23		4.22	4.05		6	
10/8/2015	10:00	Cloudy	Middle	3.5	26.70	26.70	26.70	8.43	8.43	8.43	30.55	30.55	30.55	89.6	90.9	90.7	6.04	6.13	6.12	3.54	3.52	3.55	5	5.00
	10:02		Middle	3.5	26.70	26.70		8.43	8.43		30.55	30.55		91.2	91.1		6.15	6.14		6.12	3.51		3.61	
12/8/2015	11:09	Sunny	Middle	3.5	26.60	26.60	26.70	8.31	8.31	8.32	31.34	31.33	31.32	79.9	79.3	77.8	5.37	5.32	5.22	3.37	3.24	3.25	5	5.50
	11:11		Middle	3.5	26.80	26.80		8.32	8.32		31.31	31.31		76.7	75.2		5.15	5.05		3.19	3.18		6	
14/8/2015	11:25	Cloudy	Middle	3.5	26.00	26.00	26.05	8.28	8.28	8.28	30.43	30.43	30.42	75.5	75.2	73.9	5.16	5.14	5.05	6.80	6.73	6.73	9	9.50
	11:27		Middle	3.5	26.10	26.10		8.28	8.28		30.40	30.40		73.1	71.8		4.99	4.90		6.71	6.68		10	
17/8/2015	15:45	Fine	Middle	3.0	27.30	27.30	27.40	8.13	8.13	8.13	30.62	30.62	30.62	66.2	66.0	65.2	4.41	4.40	4.35	5.64	5.87	5.74	7	6.00
	15:47		Middle	3.0	27.50	27.50		8.13	8.13		30.62	30.62		64.6	64.1		4.30	4.27		5.89	5.55		5	
19/8/2015	14:30	Sunny	Middle	3.0	26.90	26.90	27.00	8.18	8.18	8.18	31.01	31.01	31.01	82.5	82.3	82.1	5.53	5.51	5.53	2.76	2.75	2.75	6	5.50
	14:32		Middle	3.0	27.10	27.10		8.18	8.18		31.00	31.00		82.7	81.0		5.54	5.52		2.75	2.75		5	
21/8/2015	14:18	Fine	Middle	3.5	26.90	26.90	27.10	8.22	8.22	8.21	31.95	31.95	31.90	74.7	74.7	74.5	4.97	4.97	4.95	3.34	3.29	3.30	3	3.50
	14:20		Middle	3.5	27.30	27.30		8.20	8.20		31.84	31.84		74.6	73.8		4.96	4.91		3.29	3.26		4	
25/8/2015	9:24	Fine	Middle	3.5	26.30	26.30	26.35	8.26	8.26	8.26	32.54	32.54	32.51	70.1	69.2	70.6	4.71	4.64	4.74	4.33	4.22	4.24	6	7.00
	9:26		Middle	3.5	26.40	26.40		8.26	8.26		32.47	32.47		71.1	71.9		4.77	4.82		4.20	4.21		8	
27/8/2015	9:28	Fine	Middle	3.5	26.00	26.00	26.05	8.28	8.28	8.29	33.02	33.02	33.01	70.5	72.8	72.5	4.75	4.90	4.88	3.81	3.81	3.82	4	4.00
	9:30		Middle	3.5	26.10	26.10		8.29	8.29		33.00	32.99		73.7	73.0		4.96	4.91		3.81	3.83		4	

Remarks:
Single underline denotes exceedance over Action Level.
Double underline denotes exceedance over Limit Level.



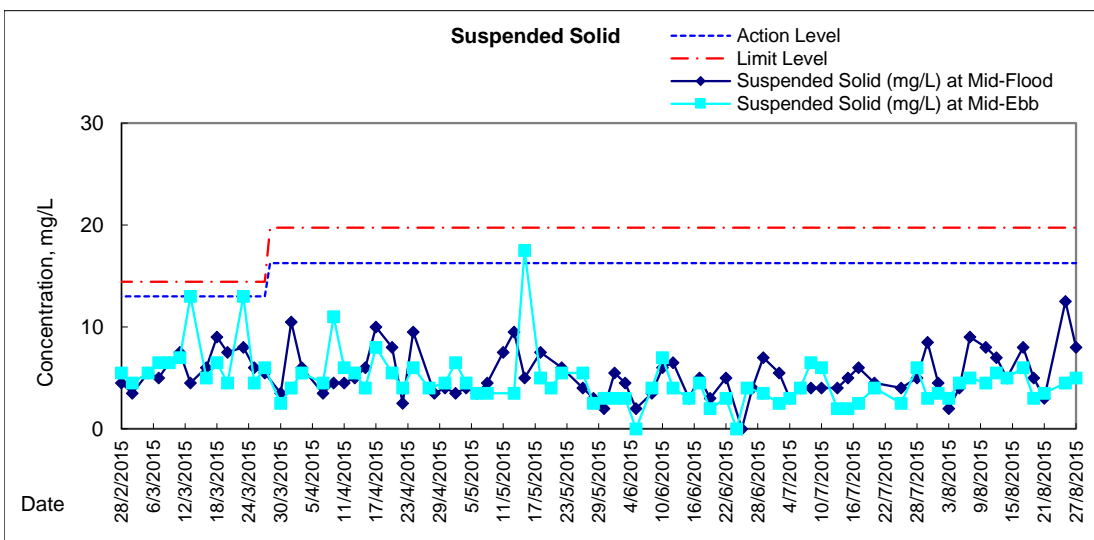
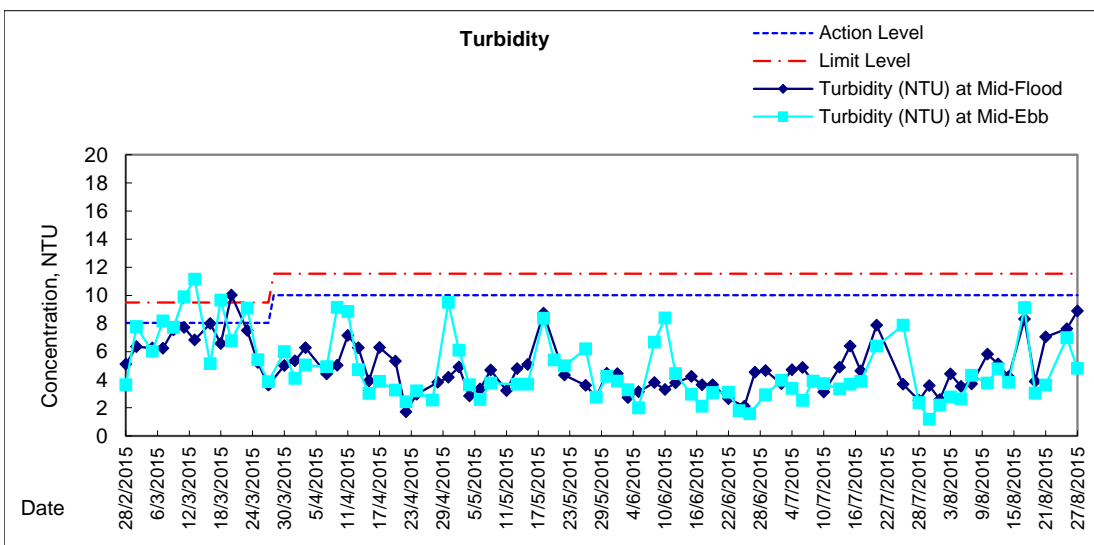
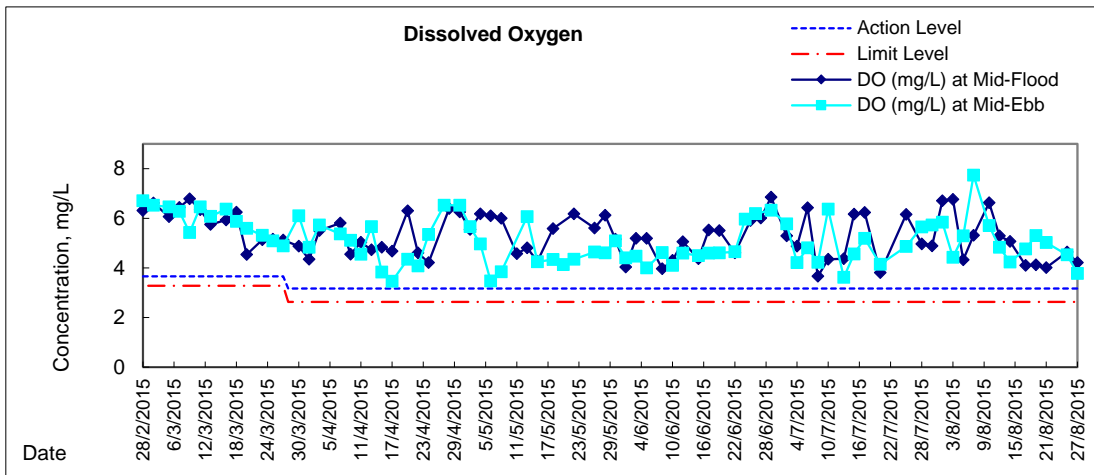
**Water Monitoring Result at WSD19 - Sheung Wan
Mid-Ebb Tide**

Date	Time	Weather Condition	Sampling Depth		Water Temperature		pH			Salinity		DO Saturation		DO		Turbidity		Suspended Solids						
					°C		-			ppt		%		mg/L		NTU		mg/L						
					Value	Average	Value	Average	Value	Average	Value	Average	Value	Average	Value	Average	Value	Average	Value	Average				
28/7/2015	9:40	Fine	Middle	3.5	27.80	27.80	27.85	8.16	8.16	8.17	24.34	24.34	24.35	85.5	83.3	82.5	5.86	5.71	5.65	2.36	2.37	2.37	5	6.00
	9:42		Middle	3.5	27.90	27.90		8.18	8.18		24.35	24.35		80.5	80.5		5.51	5.51		2.37	2.37		7	
30/7/2015	10:05	Fine	Middle	3.5	26.90	26.90	26.95	8.10	8.10	8.16	26.68	26.68	26.68	84.3	84.7	83.5	5.79	5.81	5.73	1.21	1.19	1.18	3	3.00
	10:07		Middle	3.5	27.00	27.00		8.21	8.21		26.68	26.68		83.4	81.7		5.72	5.60		1.17	1.16		3	
1/8/2015	10:07	Fine	Middle	4.0	26.70	26.70	26.75	8.17	8.17	8.18	28.66	28.66	28.66	86.2	86.6	85.7	5.87	5.90	5.84	2.14	2.20	2.19	3	3.50
	10:09		Middle	4.0	26.80	26.80		8.19	8.19		28.65	28.65		85.4	84.5		5.82	5.75		2.20	2.20		4	
3/8/2015	13:35	Fine	Middle	3.5	27.90	27.90	28.10	8.29	8.29	8.28	28.98	28.98	28.99	67.8	67.0	66.4	4.51	4.45	4.43	2.80	2.77	2.77	3	3.00
	13:37		Middle	3.5	28.30	28.30		8.27	8.27		28.99	28.99		65.9	64.9		4.43	4.31		2.76	2.75		3	
5/8/2015	14:10	Fine	Middle	3.5	27.80	27.80	28.05	8.38	8.37	8.36	30.02	30.02	30.07	82.0	78.9	80.5	5.38	5.17	5.29	2.70	2.70	2.63	5	4.50
	14:12		Middle	3.5	28.30	28.30		8.35	8.35		30.11	30.11		80.4	80.7		5.30	5.32		2.57	2.54		4	
7/8/2015	15:55	Sunny	Middle	3.5	28.60	28.60	28.75	8.49	8.49	8.52	29.62	29.62	29.63	119.4	119.6	118.4	7.82	7.83	7.74	4.28	4.29	4.31	5	5.00
	15:57		Middle	3.5	28.90	28.90		8.54	8.54		29.63	29.63		120.0	114.5		7.85	7.45		4.33	4.35		5	
10/8/2015	8:27	Cloudy	Middle	4.0	26.70	26.70	26.70	8.51	8.51	8.50	30.21	30.21	30.21	85.5	85.0	84.2	5.78	5.75	5.71	3.75	3.75	3.75	4	4.50
	8:29		Middle	4.0	26.70	26.70		8.48	8.48		30.21	30.21		83.1	83.3		5.66	5.63		3.74	3.74		5	
12/8/2015	9:51	Sunny	Middle	3.5	27.10	27.10	27.25	8.37	8.37	8.36	30.96	30.96	30.93	72.7	73.3	72.4	4.85	4.89	4.83	4.56	4.80	4.76	6	5.50
	9:53		Middle	3.5	27.40	27.40		8.35	8.35		30.89	30.89		72.4	71.0		4.83	4.74		4.84	4.85		5	
14/8/2015	10:01	Cloudy	Middle	3.5	25.90	25.90	25.95	8.28	8.28	8.29	30.32	30.32	30.32	62.9	32.5	54.4	4.30	4.27	4.23	3.87	3.81	3.80	5	5.00
	10:03		Middle	3.5	26.00	26.00		8.29	8.29		30.32	30.32		61.4	60.7		4.20	4.15		3.76	3.77		5	
17/8/2015	14:25	Fine	Middle	3.0	28.80	28.80	28.95	8.28	8.28	8.24	30.21	30.21	30.18	74.7	73.5	73.3	4.90	4.80	4.77	9.07	9.06	9.13	6	6.00
	14:27		Middle	3.0	29.10	29.10		8.19	8.19		30.15	30.15		73.1	72.0		4.77	4.60		9.10	9.29		6	
19/8/2015	13:20	Sunny	Middle	3.0	28.00	28.00	28.20	8.27	8.27	8.25	30.56	30.56	30.56	80.8	81.1	80.7	5.32	5.33	5.30	3.03	3.03	3.03	3	3.00
	13:22		Middle	3.0	28.40	28.40		8.22	8.22		30.55	30.55		80.2	80.6		5.27	5.29		3.04	3.03		3	
21/8/2015	15:26	Fine	Middle	3.5	27.10	27.10	27.20	8.10	8.10	8.14	31.18	31.18	31.11	75.8	76.4	75.2	5.06	5.10	5.02	3.86	3.56	3.62	3	3.50
	15:28		Middle	3.5	27.30	27.30		8.18	8.18		31.04	31.04		75.0	73.7		5.00	4.92		3.54	3.52		4	
25/8/2015	8:13	Fine	Middle	3.5	26.30	26.30	26.40	8.41	8.41	8.39	32.23	32.24	32.22	69.1	67.8	67.5	4.64	4.56	4.53	6.95	6.88	6.99	4	4.50
	8:15		Middle	3.5	26.50	26.50		8.37	8.37		32.21	32.21		67.0	65.9		4.50	4.42		7.07	7.05		5	
27/8/2015	8:00	Fine	Middle	3.5	26.20	26.20	26.25	8.24	8.24	8.24	32.84	32.84	32.85	56.1	56.4	56.5	3.76	3.78	3.78	4.71	4.80	4.80	4	5.00
	8:02		Middle	3.5	26.30	26.30		8.20	8.26		32.85	32.85		56.7	56.9		3.80	3.78		4.84	4.85		6	

Remarks:
Single underline denotes exceedance over Action Level.
Double underline denotes exceedance over Limit Level.

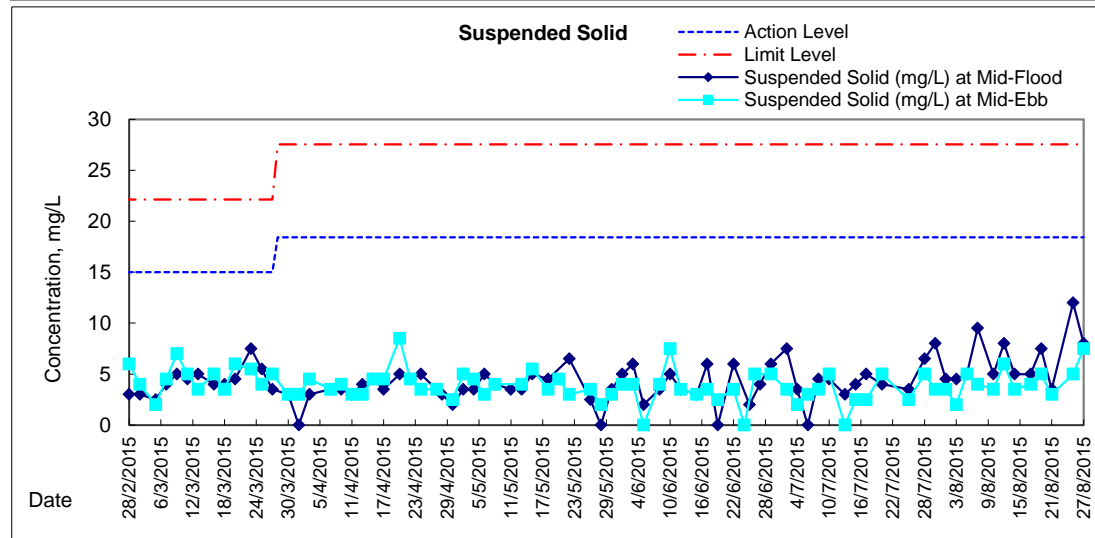
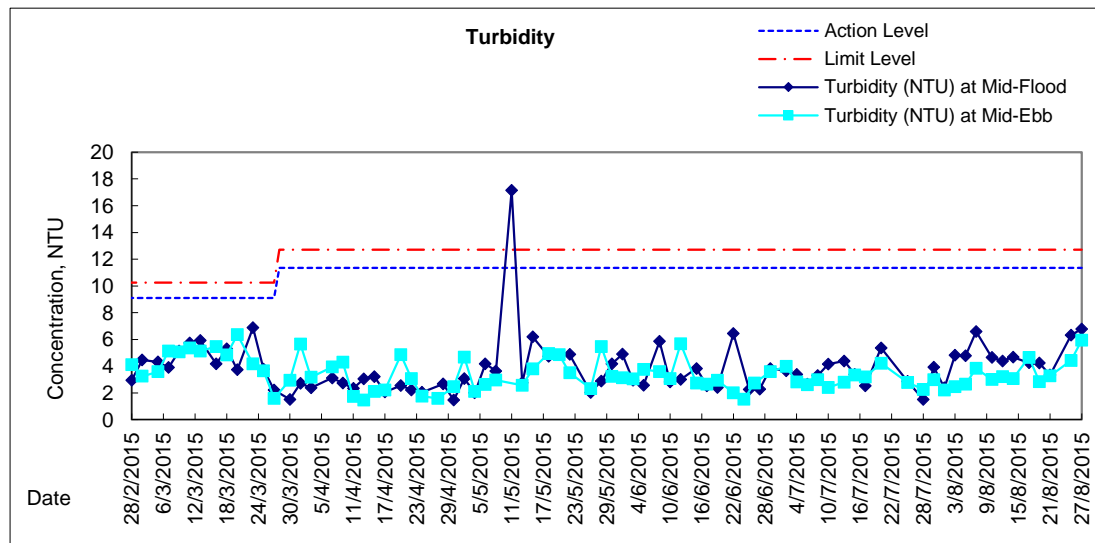
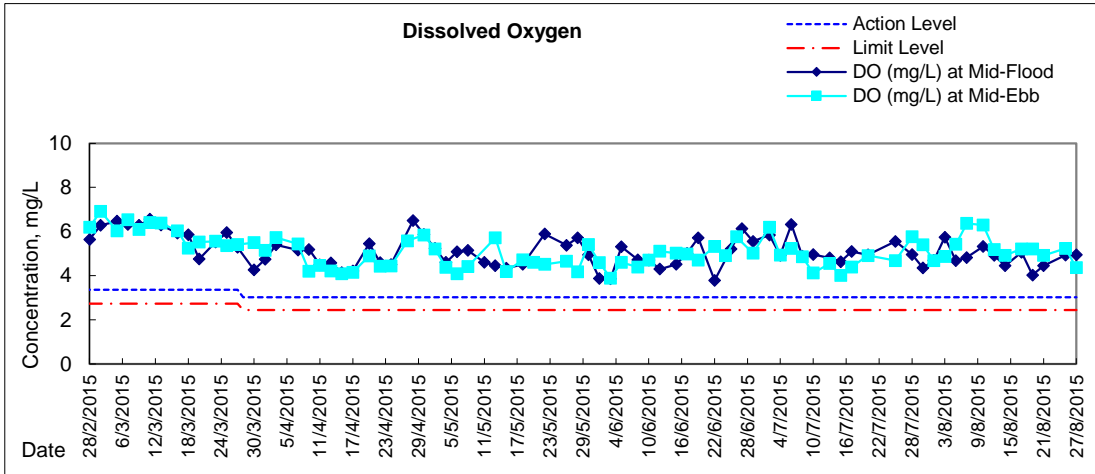


Graphic Presentation of Water Quality Result of WSD19 - Sheung Wan



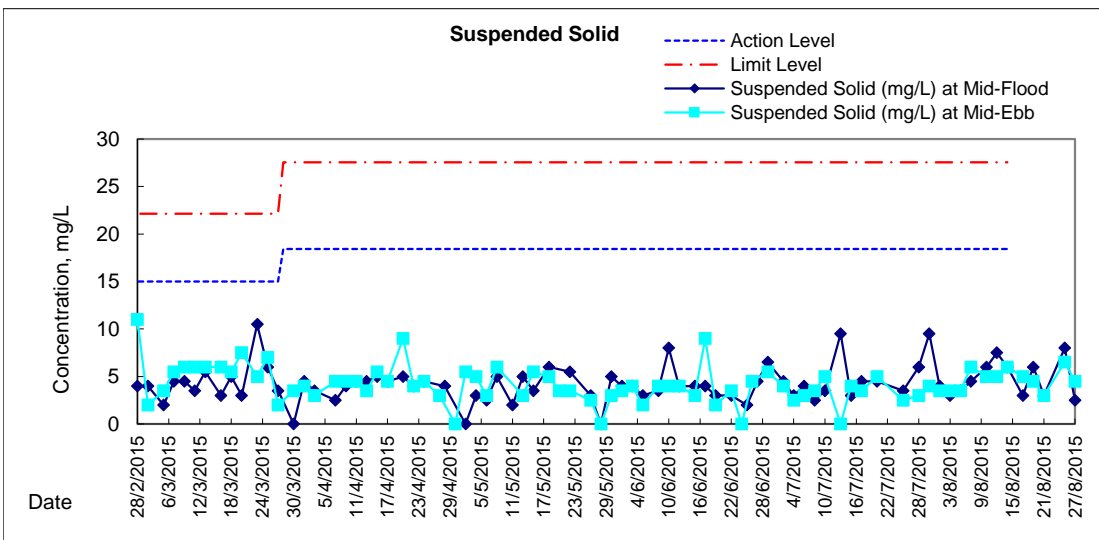
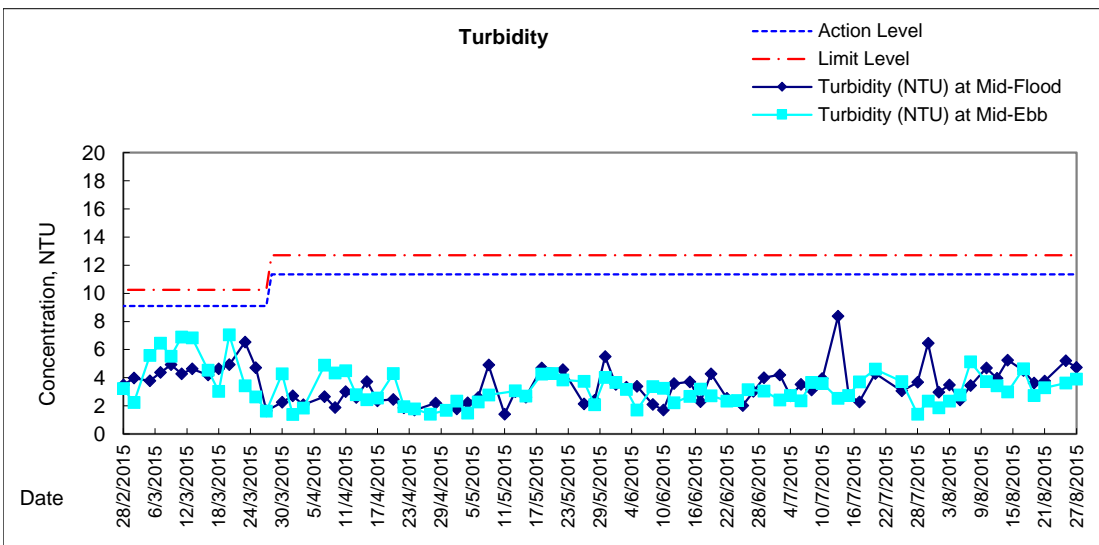
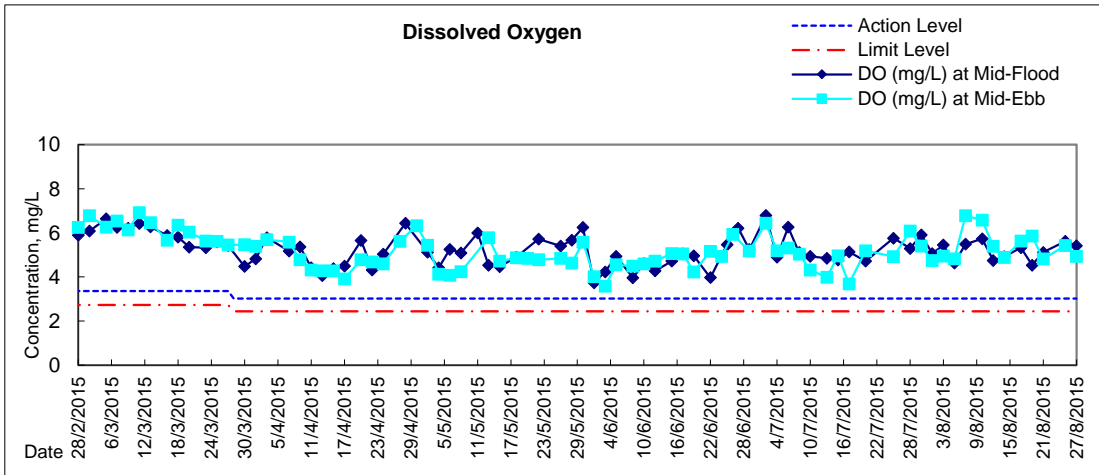


Graphic Presentation of Water Quality Result of C1 - HKCEC



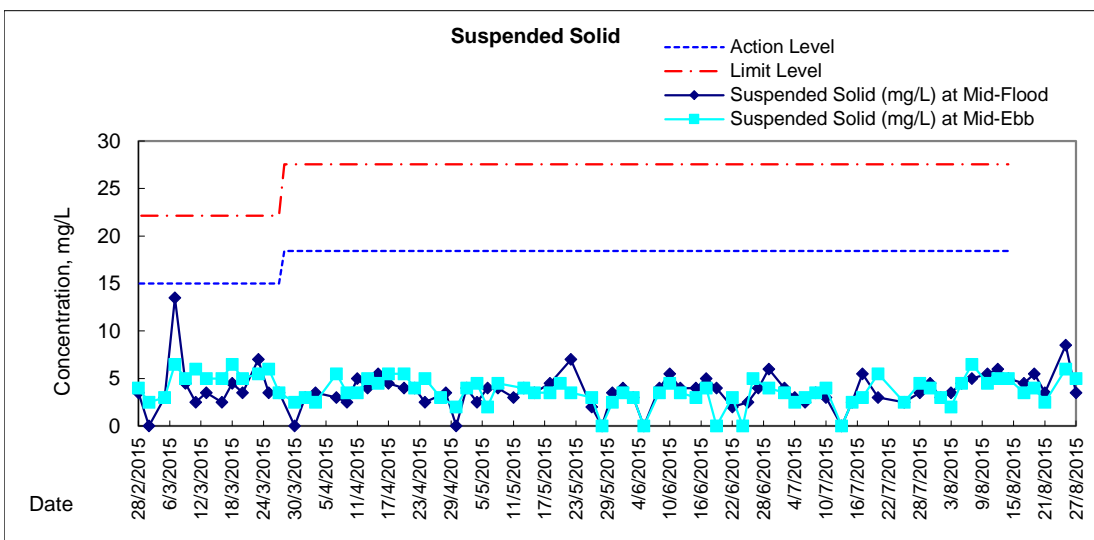
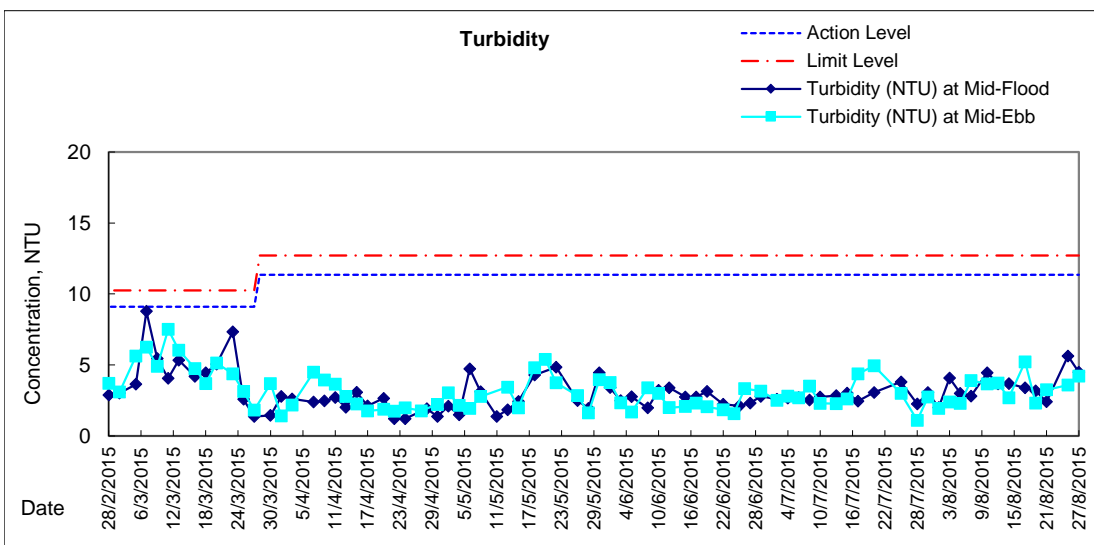
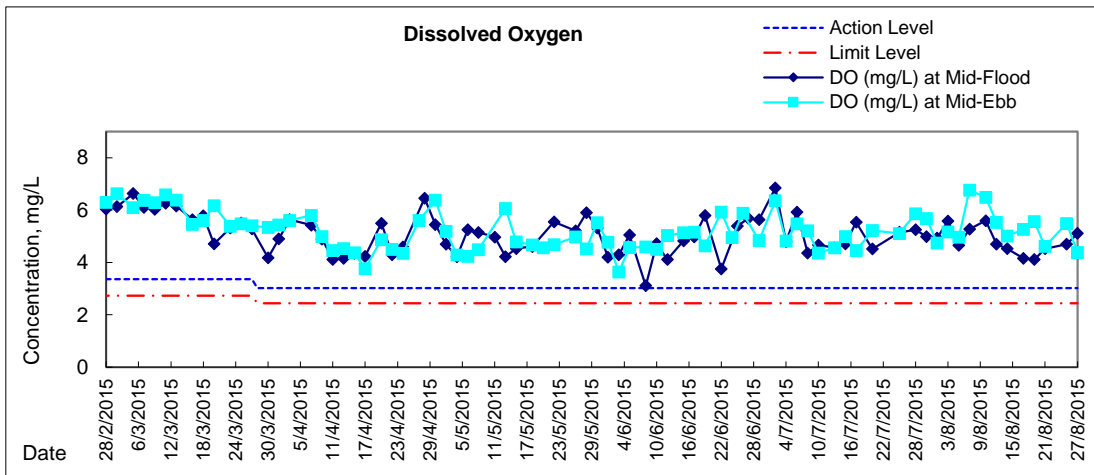


Graphic Presentation of Water Quality Result of P1 - HKCEC Phase I



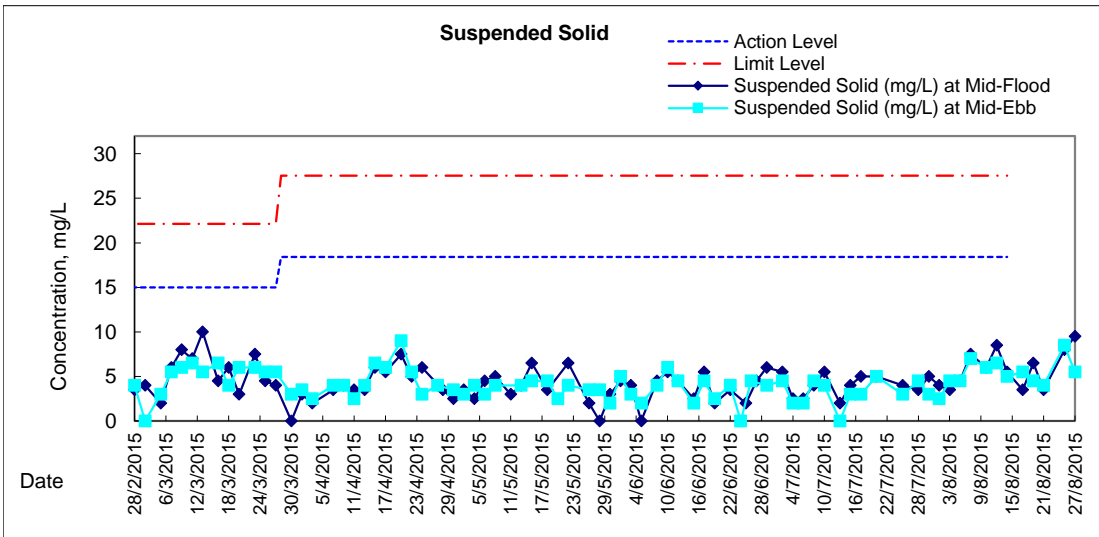
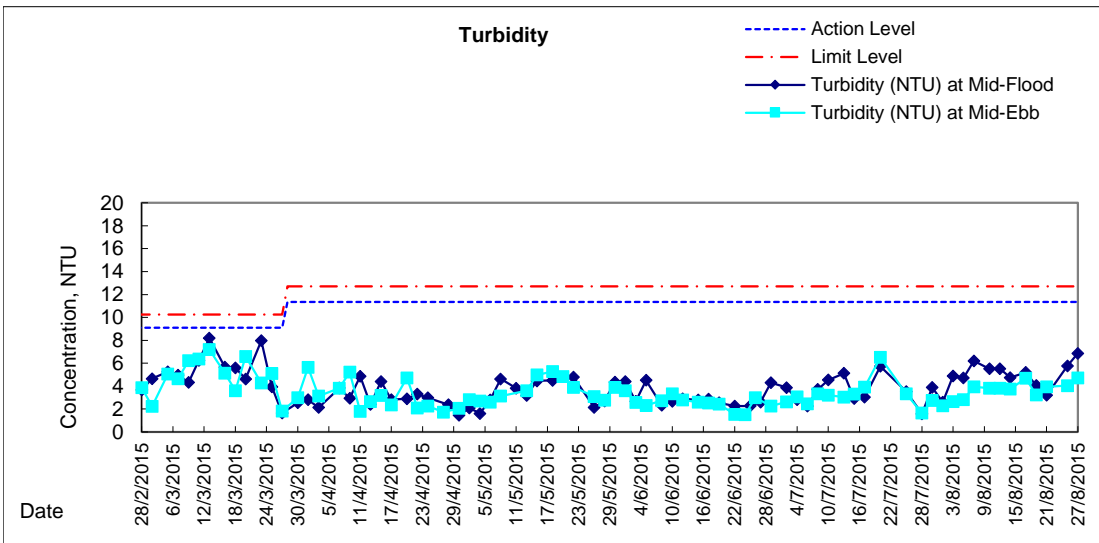
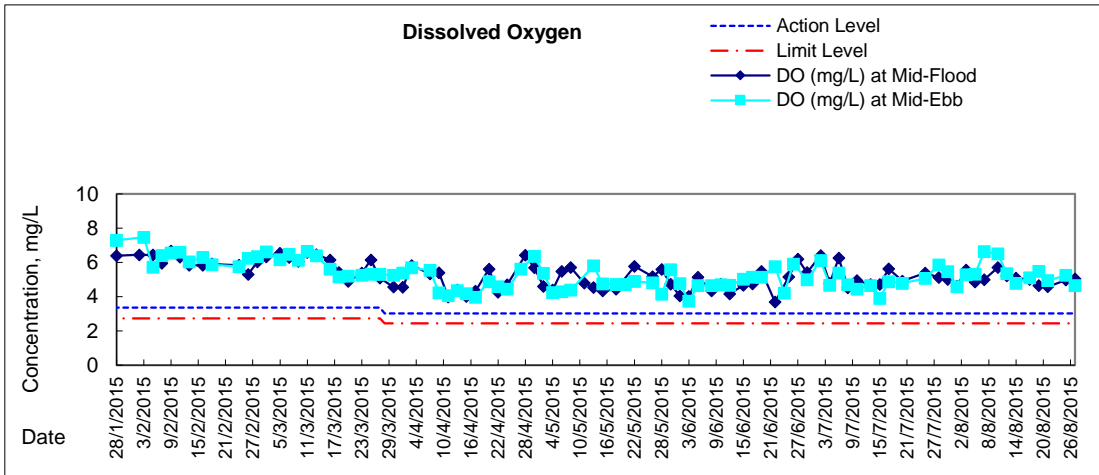


Graphic Presentation of Water Quality Result of P3 - APA



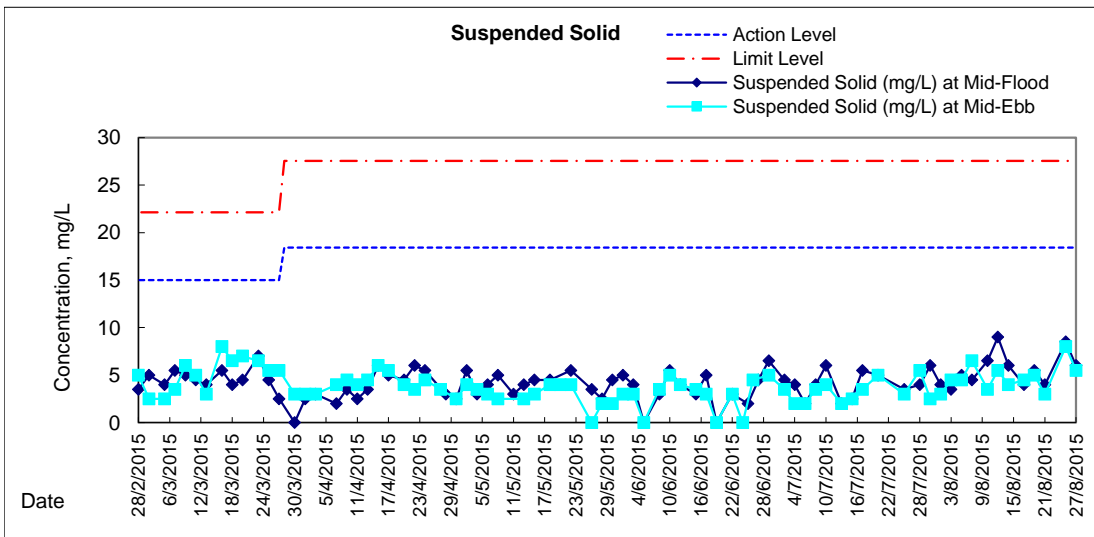
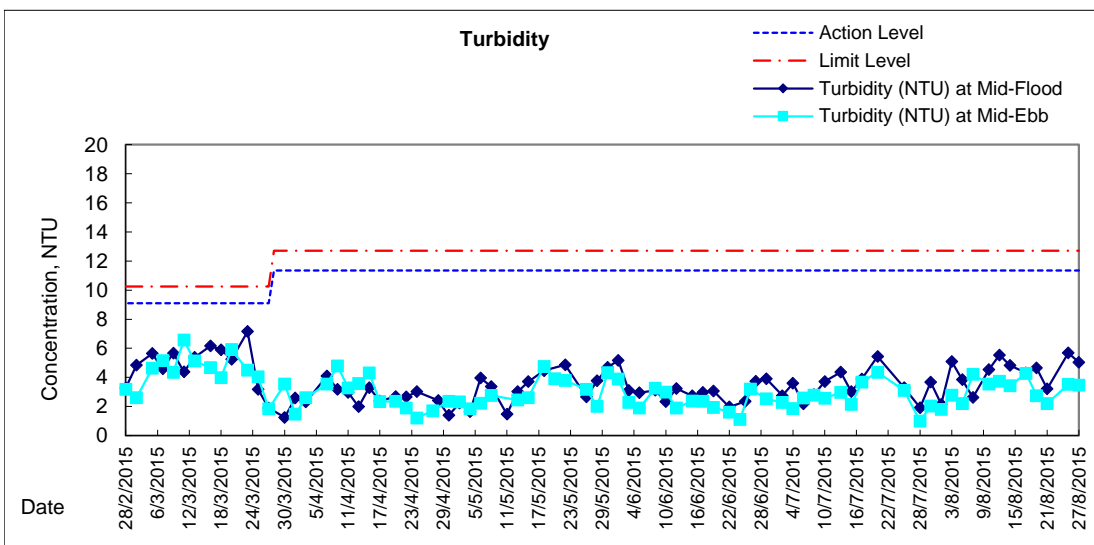
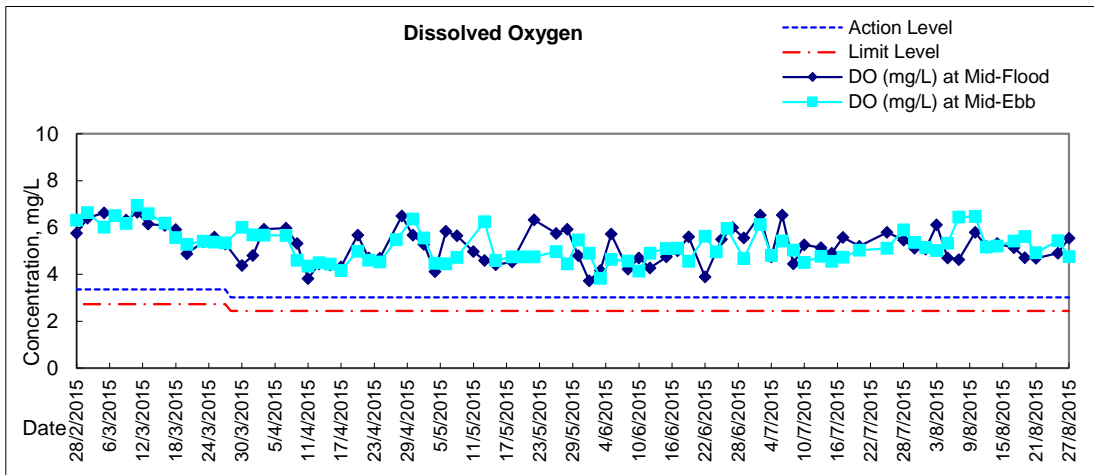


Graphic Presentation of Water Quality Result of P5 - WCT / RT / IT



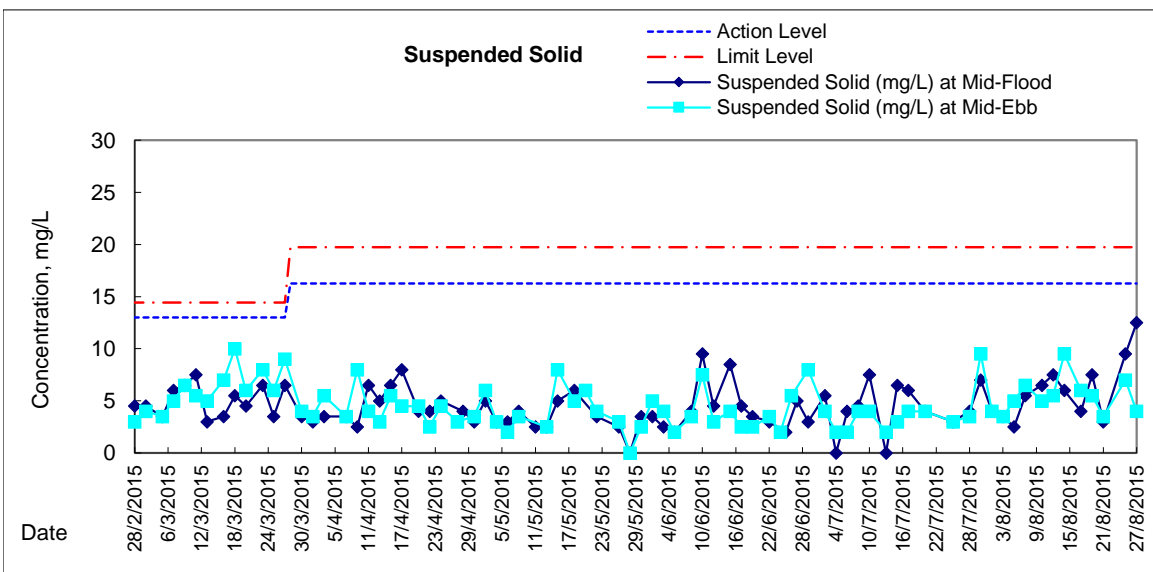
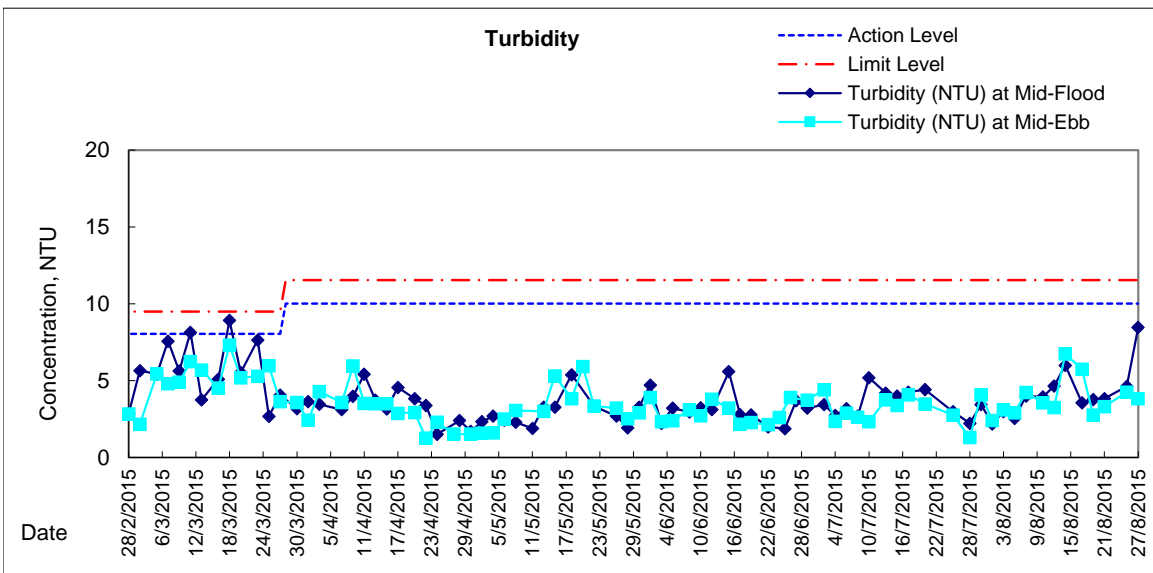
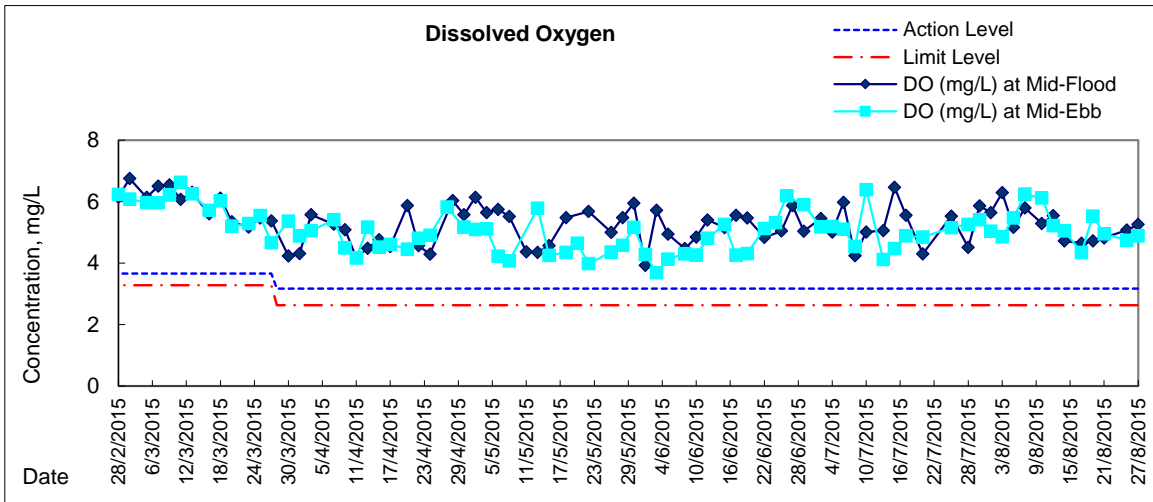


Graphic Presentation of Water Quality Result of P4 - SOC



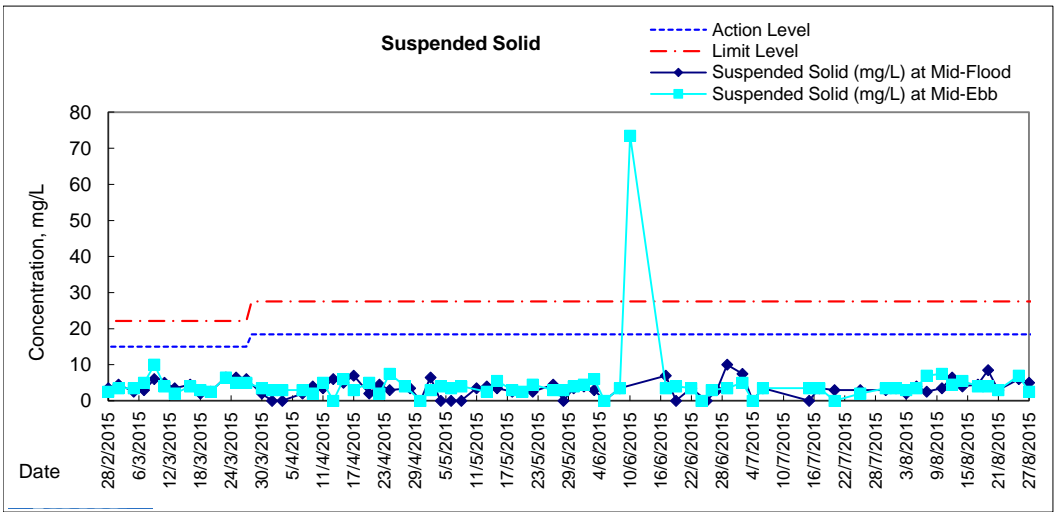
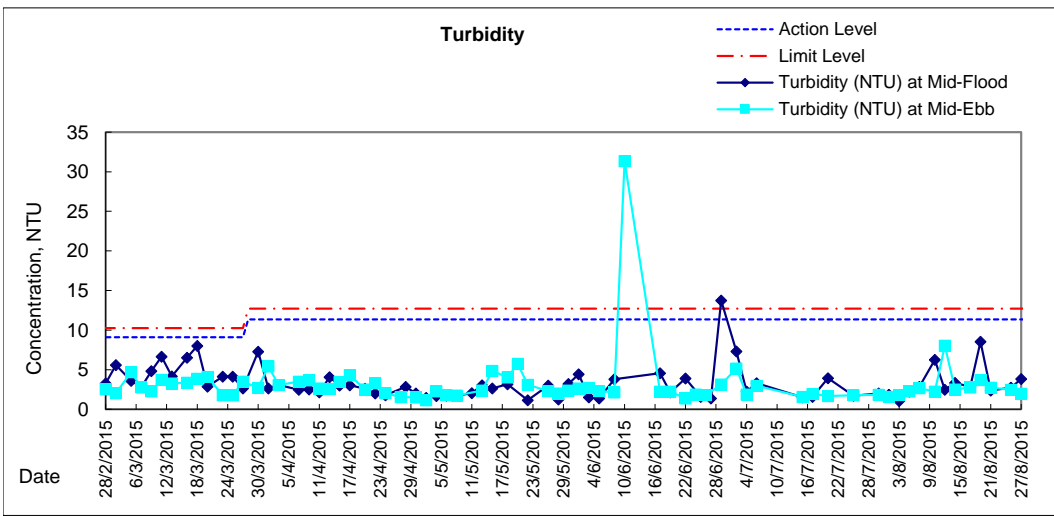
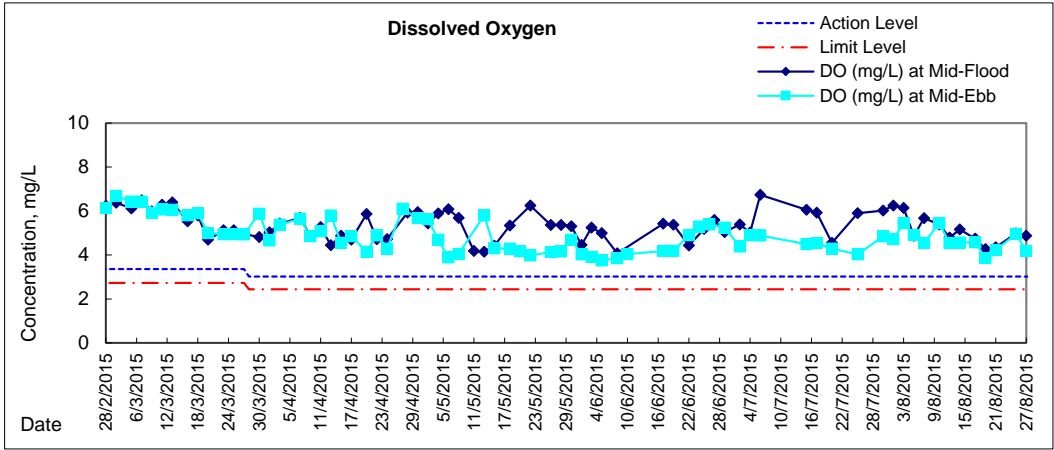


Graphic Presentation of Water Quality Result of RW21-P789 - GEC/CRC/SHK





Graphic Presentation of Water Quality Result of C7 - Windsor House





**Water Monitoring Result at C6 - Excelsior Hotel
Mid-Flood Tide**

Date	Time	Weater Condition	Sampling Depth		Water Temperature			pH			Salinity			DO Saturation			DO		
					°C			-			ppt			%			mg/L		
					Value	Average		Value	Average		Value	Average		Value	Average		Value	Average	
28/7/2015	-	Fine	Surface	-	-	-	-	-	-	-	-	-	-	-	-	-	-	-	-
	17:50		Middle	1.5	27.70	27.70	27.7	8.10	8.10	8.1	25.34	25.34	25.3	65.3	64.7	65.0	4.43	4.42	4.43
	-		Bottom	-	-	-	-	-	-	-	-	-	-	-	-	-	-	-	-
30/7/2015	-	Cloudy	Surface	-	-	-	-	-	-	-	-	-	-	-	-	-	-	-	-
	18:50		Middle	1.5	26.50	26.50	26.5	8.30	8.30	8.3	26.97	26.97	27.0	77.1	77.0	77.1	5.33	5.33	5.33
	-		Bottom	-	-	-	-	-	-	-	-	-	-	-	-	-	-	-	-
1/8/2015	-	Fine	Surface	-	-	-	-	-	-	-	-	-	-	-	-	-	-	-	-
	21:50		Middle	1.5	25.64	25.62	25.6	7.50	7.49	7.5	27.41	27.41	27.4	69.8	69.1	69.5	4.97	4.92	4.95
	-		Bottom	-	-	-	-	-	-	-	-	-	-	-	-	-	-	-	-
3/8/2015	-	Fine	Surface	-	-	-	-	-	-	-	-	-	-	-	-	-	-	-	-
	19:50		Middle	1.5	26.47	26.47	26.5	7.47	7.47	7.5	28.20	28.20	28.2	97.6	96.9	97.3	6.70	6.65	6.68
	-		Bottom	-	-	-	-	-	-	-	-	-	-	-	-	-	-	-	-
5/8/2015	-	Fine	Surface	-	-	-	-	-	-	-	-	-	-	-	-	-	-	-	-
	10:33		Middle	1.5	26.70	26.70	26.7	8.19	8.19	8.2	29.14	29.14	29.1	73.7	72.6	73.2	5.01	4.94	4.98
	-		Bottom	-	-	-	-	-	-	-	-	-	-	-	-	-	-	-	-
7/8/2015	-	Fine	Surface	-	-	-	-	0.00	-	0.0	-	-	-	-	-	-	-	-	-
	12:40		Middle	1.5	27.00	27.00	27.0	8.21	8.21	8.2	29.40	29.40	29.4	71.7	72.2	72.0	4.84	4.88	4.86
	-		Bottom	-	-	-	-	-	-	-	-	-	-	-	-	-	-	-	-
10/8/2015	-	Cloudy	Surface	-	-	-	-	-	-	-	-	-	-	-	-	-	-	-	-
	13:26		Middle	1.0	27.70	27.70	27.7	8.39	8.39	8.4	29.52	29.52	29.5	91.4	89.6	90.5	6.09	5.97	6.03
	-		Bottom	-	-	-	-	-	-	-	-	-	-	-	-	-	-	-	-
12/8/2015	-	Fine	Surface	-	-	-	-	-	-	-	-	-	-	-	-	-	-	-	-
	15:10		Middle	1.0	29.00	29.00	29.0	8.27	8.27	8.3	30.33	30.33	30.3	68.7	69.8	69.3	4.44	4.51	4.48
	-		Bottom	-	-	-	-	-	-	-	-	-	-	-	-	-	-	-	-
14/8/2015	-	Cloudy	Surface	-	-	-	-	-	-	-	-	-	-	-	-	-	-	-	-
	18:45		Middle	1.0	25.70	25.70	25.7	8.16	8.16	8.2	28.09	28.09	28.1	63.7	64.4	64.1	4.45	4.48	4.47
	-		Bottom	-	-	-	-	-	-	-	-	-	-	-	-	-	-	-	-
17/8/2015	-	Fine	Surface	-	-	-	-	-	-	-	-	-	-	-	-	-	-	-	-
	10:22		Middle	1.0	26.80	26.80	26.8	8.08	8.08	8.1	30.02	30.02	30.0	75.2	75.5	75.4	5.06	5.07	5.07
	-		Bottom	-	-	-	-	-	-	-	-	-	-	-	-	-	-	-	-
19/8/2015	9:46	Fine	Surface	1.0	27.20	27.20	27.2	8.07	8.07	8.1	27.86	27.86	27.9	66.8	67.6	67.2	4.53	4.58	4.56
	-		Middle	-	-	-	-	-	-	-	-	-	-	-	-	-	-	-	-
	9:48		Bottom	3.0	26.70	26.70	26.7	8.04	8.04	8.0	29.96	29.96	30.0	67.8	66.5	67.2	4.58	4.49	4.54
21/8/2015	-	Fine	Surface	-	-	-	-	-	-	-	-	-	-	-	-	-	-	-	-
	9:53		Middle	1.5	26.60	26.60	26.6	8.08	8.08	8.1	29.84	29.84	29.8	57.7	58.9	58.3	3.91	3.99	3.95
	-		Bottom	-	-	-	-	-	-	-	-	-	-	-	-	-	-	-	-
25/8/2015	-	Fine	Surface	-	-	-	-	-	-	-	-	-	-	-	-	-	-	-	-
	16:45		Middle	1.0	27.50	27.50	27.5	8.21	8.21	8.2	29.99	29.99	30.0	71.5	70.9	71.2	4.77	4.73	4.75
	-		Bottom	-	-	-	-	-	-	-	-	-	-	-	-	-	-	-	-
27/8/2015	-	Fine	Surface	-	-	-	-	-	-	-	-	-	-	-	-	-	-	-	-
	17:45		Middle	1.5	26.50	26.50	26.5	8.22	8.22	8.2	31.94	31.94	31.9	63.8	64.1	64.0	4.29	4.31	4.30
	-		Bottom	-	-	-	-	-	-	-	-	-	-	-	-	-	-	-	-

Remarks:
Single underline denotes exceedance over Action Level.
Double underline denotes exceedance over Limit Level.



**Water Monitoring Result at Ex-WPCWA SW - South-western corners of ex-Public Cargo Works Area
Mid-Flood Tide**

Date	Time	Weather Condition	Sampling Depth		Water Temperature			pH			Salinity			DO Saturation			DO		
					°C			-			ppt			%			mg/L		
					Value	Average		Value	Average		Value	Average		Value	Average		Value	Average	
28/7/2015	-	Fine	Surface	-	-	-	-	-	-	-	-	-	-	-	-	-	-	-	-
	16:40		Middle	1.5	27.30	27.30	27.3	8.16	8.16	8.2	25.33	25.33	25.3	53.0	51.9	52.5	3.64	3.56	3.60
	-		Bottom	-	-	-	-	-	-	-	-	-	-	-	-	-	-	-	-
30/7/2015	-	Cloudy	Surface	-	-	-	-	-	-	-	-	-	-	-	-	-	-	-	-
	17:26		Middle	1.5	26.80	26.80	26.8	8.42	8.42	8.4	17.79	17.79	17.8	58.6	58.0	58.3	4.24	4.20	4.22
	-		Bottom	-	-	-	-	-	-	-	-	-	-	-	-	-	-	-	-
1/8/2015	-	Fine	Surface	-	-	-	-	-	-	-	-	-	-	-	-	-	-	-	-
	21:19		Middle	1.5	25.38	25.38	25.4	7.43	7.43	7.4	20.01	19.93	20.0	47.5	47.0	47.3	3.55	3.50	3.53
	-		Bottom	-	-	-	-	-	-	-	-	-	-	-	-	-	-	-	-
3/8/2015	-	Fine	Surface	-	-	-	-	-	-	-	-	-	-	-	-	-	-	-	-
	20:28		Middle	1.0	26.70	26.70	26.7	7.55	7.55	7.6	16.82	16.82	16.8	73.2	73.1	73.2	5.34	5.33	5.34
	-		Bottom	-	-	-	-	-	-	-	-	-	-	-	-	-	-	-	-
5/8/2015	-	Fine	Surface	-	-	-	-	-	-	-	-	-	-	-	-	-	-	-	-
	10:18		Middle	1.0	26.10	26.10	26.1	8.26	8.26	8.3	29.02	29.02	29.0	61.5	61.3	61.4	4.23	4.21	4.22
	-		Bottom	-	-	-	-	-	-	-	-	-	-	-	-	-	-	-	-
7/8/2015	-	Fine	Surface	-	-	-	-	-	-	-	-	-	-	-	-	-	-	-	-
	11:30		Middle	1.0	27.20	27.20	27.2	8.31	8.31	8.3	23.84	23.84	23.8	63.8	64.0	63.9	4.43	4.44	4.44
	-		Bottom	-	-	-	-	-	-	-	-	-	-	-	-	-	-	-	-
10/8/2015	-	Cloudy	Surface	-	-	-	-	-	-	-	-	-	-	-	-	-	-	-	-
	16:55		Middle	1.0	26.60	26.60	26.6	8.35	8.35	8.4	26.56	26.56	26.6	55.7	55.0	55.4	3.85	3.80	3.83
	-		Bottom	-	-	-	-	-	-	-	-	-	-	-	-	-	-	-	-
12/8/2015	-	Fine	Surface	-	-	-	-	-	-	-	-	-	-	-	-	-	-	-	-
	18:25		Middle	1.0	26.90	26.90	26.9	8.23	8.23	8.2	29.32	29.32	29.3	56.8	56.5	56.7	3.34	3.32	3.33
	-		Bottom	-	-	-	-	-	-	-	-	-	-	-	-	-	-	-	-
14/8/2015	-	Cloudy	Surface	-	-	-	-	-	-	-	-	-	-	-	-	-	-	-	-
	21:36		Middle	1.0	25.60	25.60	25.6	8.02	8.02	8.0	23.41	23.41	23.4	41.6	41.9	41.8	2.97	2.99	<u>2.98</u>
	-		Bottom	-	-	-	-	-	-	-	-	-	-	-	-	-	-	-	-
17/8/2015	-	Fine	Surface	-	-	-	-	-	-	-	-	-	-	-	-	-	-	-	-
	9:35		Middle	1.5	25.90	25.90	25.9	8.15	8.15	8.2	29.90	29.90	29.9	60.8	60.4	60.6	4.16	4.14	4.15
	-		Bottom	-	-	-	-	-	-	-	-	-	-	-	-	-	-	-	-
19/8/2015	-	Fine	Surface	-	-	-	-	-	-	-	-	-	-	-	-	-	-	-	-
	9:28		Middle	1.0	26.20	26.20	26.2	8.08	8.08	8.1	29.20	29.20	29.2	57.3	57.0	57.2	3.91	3.89	3.90
	-		Bottom	-	-	-	-	-	-	-	-	-	-	-	-	-	-	-	-
21/8/2015	-	Fine	Surface	-	-	-	-	-	-	-	-	-	-	-	-	-	-	-	-
	9:25		Middle	1.0	26.50	26.50	26.5	8.14	8.14	8.1	29.87	29.87	29.9	66.9	66.2	66.6	4.53	4.46	4.50
	-		Bottom	-	-	-	-	-	-	-	-	-	-	-	-	-	-	-	-
25/8/2015	-	Fine	Surface	-	-	-	-	-	-	-	-	-	-	-	-	-	-	-	-
	16:27		Middle	1.0	26.10	26.10	26.1	8.29	8.29	8.3	30.91	30.91	30.9	74.7	74.3	74.5	5.07	5.04	5.06
	-		Bottom	-	-	-	-	-	-	-	-	-	-	-	-	-	-	-	-
27/8/2015	-	Fine	Surface	-	-	-	-	-	-	-	-	-	-	-	-	-	-	-	-
	17:00		Middle	1.0	26.30	26.30	26.3	8.25	8.25	8.3	31.49	31.49	31.5	53.0	50.3	51.7	3.58	3.39	3.49
	-		Bottom	-	-	-	-	-	-	-	-	-	-	-	-	-	-	-	-

Remarks:
Single underline denotes exceedance over Action Level.
Double underline denotes exceedance over Limit Level.



**Water Monitoring Result at Ex-WPCWA SE - South-eastern corners of ex-Public Cargo Works Area
Mid-Flood Tide**

Date	Time	Weather Condition	Sampling Depth		Water Temperature			pH			Salinity		DO Saturation		DO				
					°C			-			ppt		%		mg/L				
					Value	Average		Value	Average		Value	Average	Value	Average	Value	Average			
28/7/2015	-	Fine	Surface	-	-	-	-	-	-	-	-	-	-	-	-	-	-	-	
	-		Middle	-	-	-	-	-	-	-	-	-	-	-	-	-	-	-	
	-		Bottom	-	-	-	-	-	-	-	-	-	-	-	-	-	-	-	
30/7/2015	-	Cloudy	Surface	-	-	-	-	-	-	-	-	-	-	-	-	-	-	-	
	-		Middle	-	-	-	-	-	-	-	-	-	-	-	-	-	-	-	
	-		Bottom	-	-	-	-	-	-	-	-	-	-	-	-	-	-	-	
1/8/2015	-	Fine	Surface	-	-	-	-	-	-	-	-	-	-	-	-	-	-	-	
	-		Middle	-	-	-	-	-	-	-	-	-	-	-	-	-	-	-	
	-		Bottom	-	-	-	-	-	-	-	-	-	-	-	-	-	-	-	
3/8/2015	-	Fine	Surface	-	-	-	-	-	-	-	-	-	-	-	-	-	-	-	
	-		Middle	-	-	-	-	-	-	-	-	-	-	-	-	-	-	-	
	-		Bottom	-	-	-	-	-	-	-	-	-	-	-	-	-	-	-	
5/8/2015	-	Fine	Surface	-	-	-	-	-	-	-	-	-	-	-	-	-	-	-	
	-		Middle	-	-	-	-	-	-	-	-	-	-	-	-	-	-	-	
	-		Bottom	-	-	-	-	-	-	-	-	-	-	-	-	-	-	-	
7/8/2015	-	Fine	Surface	-	-	-	-	-	-	-	-	-	-	-	-	-	-	-	
	-		Middle	-	-	-	-	-	-	-	-	-	-	-	-	-	-	-	
	-		Bottom	-	-	-	-	-	-	-	-	-	-	-	-	-	-	-	
10/8/2015	-	Cloudy	Surface	-	-	-	-	-	-	-	-	-	-	-	-	-	-	-	
	16:50		Middle	0.5	26.90	26.90	26.9	8.39	8.39	8.4	28.85	28.85	28.9	56.6	56.5	56.6	3.73	3.72	3.73
	-		Bottom	-	-	-	-	-	-	-	-	-	-	-	-	-	-	-	-
12/8/2015	-	Fine	Surface	-	-	-	-	-	-	-	-	-	-	-	-	-	-	-	
	18:20		Middle	0.5	27.20	27.20	27.2	8.28	8.28	8.3	29.09	29.09	29.1	55.6	55.8	55.7	3.75	3.77	3.76
	-		Bottom	-	-	-	-	-	-	-	-	-	-	-	-	-	-	-	-
14/8/2015	-	Cloudy	Surface	-	-	-	-	-	-	-	-	-	-	-	-	-	-	-	
	21:25		Middle	0.5	25.30	25.30	25.3	8.20	8.20	8.2	28.96	28.96	29.0	62.1	60.2	61.2	4.34	4.28	4.31
	-		Bottom	-	-	-	-	-	-	-	-	-	-	-	-	-	-	-	-
17/8/2015	-	Fine	Surface	-	-	-	-	-	-	-	-	-	-	-	-	-	-	-	
	9:30		Middle	1.0	26.10	26.10	26.1	8.17	8.17	8.2	30.12	30.12	30.1	58.0	59.1	58.6	3.94	4.01	3.98
	-		Bottom	-	-	-	-	-	-	-	-	-	-	-	-	-	-	-	-
19/8/2015	-	Fine	Surface	-	-	-	-	-	-	-	-	-	-	-	-	-	-	-	
	9:26		Middle	0.5	26.90	26.90	26.9	8.10	8.10	8.1	29.39	29.39	29.4	45.1	44.0	44.6	3.05	2.98	<u>3.02</u>
	-		Bottom	-	-	-	-	-	-	-	-	-	-	-	-	-	-	-	-
21/8/2015	-	Fine	Surface	-	-	-	-	-	-	-	-	-	-	-	-	-	-	-	
	9:35		Middle	1.0	26.50	26.50	26.5	8.16	8.16	8.2	29.35	29.35	29.4	51.8	52.9	52.4	3.53	3.60	3.57
	-		Bottom	-	-	-	-	-	-	-	-	-	-	-	-	-	-	-	-
25/8/2015	-	Fine	Surface	-	-	-	-	-	-	-	-	-	-	-	-	-	-	-	
	16:25		Middle	0.5	26.70	26.70	26.7	8.26	8.26	8.3	31.21	31.21	31.2	61.7	60.4	61.1	4.15	4.05	4.10
	-		Bottom	-	-	-	-	-	-	-	-	-	-	-	-	-	-	-	-
27/8/2015	-	Fine	Surface	-	-	-	-	-	-	-	-	-	-	-	-	-	-	-	
	17:02		Middle	0.5	26.20	26.20	26.2	8.24	8.24	8.2	30.44	30.44	30.4	48.4	48.6	48.5	3.29	3.31	<u>3.30</u>
	-		Bottom	-	-	-	-	-	-	-	-	-	-	-	-	-	-	-	-

Remarks:
Single underline denotes exceedance over Action Level.
Double underline denotes exceedance over Limit Level.



**Water Monitoring Result at C6 - Excelsior Hotel
Mid-Ebb Tide**

Date	Time	Weater Condition	Sampling Depth		Water Temperature			pH			Salinity			DO Saturation			DO		
					°C			-			ppt			%			mg/L		
					Value	Average		Value	Average		Value	Average		Value	Average		Value	Average	
28/7/2015	-	Fine	Surface	-	-	-	-	-	-	-	-	-	-	-	-	-	-	-	-
	9:00		Middle	2	27.40	27.40	27.4	8.05	8.05	8.1	24.58	24.58	24.6	68.7	68.8	68.8	4.73	4.73	4.73
	-		Bottom	-	-	-	-	-	-	-	-	-	-	-	-	-	-	-	-
30/7/2015	-	Fine	Surface	-	-	-	-	-	-	-	-	-	-	-	-	-	-	-	-
	11:38		Middle	2	27.30	27.30	27.3	8.17	8.17	8.2	24.75	24.75	24.8	70.3	68.6	69.5	4.85	4.72	4.79
	-		Bottom	-	-	-	-	-	-	-	-	-	-	-	-	-	-	-	-
1/8/2015	-	Fine	Surface	-	-	-	-	-	-	-	-	-	-	-	-	-	-	-	-
	15:00		Middle	2	29.40	29.40	29.4	8.22	8.22	8.2	28.88	28.88	28.9	75.2	73.8	74.5	4.88	4.78	4.83
	-		Bottom	-	-	-	-	-	-	-	-	-	-	-	-	-	-	-	-
3/8/2015	-	Fine	Surface	-	-	-	-	-	-	-	-	-	-	-	-	-	-	-	-
	15:18		Middle	2	28.00	28.00	28.0	8.03	8.04	8.0	28.34	28.34	28.3	75.0	75.5	75.3	4.66	5.03	4.85
	-		Bottom	-	-	-	-	-	-	-	-	-	-	-	-	-	-	-	-
5/8/2015	-	Fine	Surface	-	-	-	-	-	-	-	-	-	-	-	-	-	-	-	-
	15:58		Middle	2	26.90	26.90	26.9	8.17	8.17	8.2	28.43	28.43	28.4	82.7	80.6	81.7	5.60	5.44	5.52
	-		Bottom	-	-	-	-	-	-	-	-	-	-	-	-	-	-	-	-
7/8/2015	-	Sunny	Surface	-	-	-	-	-	-	-	-	-	-	-	-	-	-	-	-
	17:40		Middle	2	27.30	27.30	27.3	8.28	8.28	8.3	29.05	29.05	29.1	62.9	64.7	63.8	4.24	4.35	4.30
	-		Bottom	-	-	-	-	-	-	-	-	-	-	-	-	-	-	-	-
10/8/2015	-	Cloudy	Surface	-	-	-	-	-	-	-	-	-	-	-	-	-	-	-	-
	10:30		Middle	1	28.70	28.70	28.7	8.30	8.30	8.3	28.15	28.15	28.2	66.9	67.1	67.0	4.52	4.53	4.53
	-		Bottom	-	-	-	-	-	-	-	-	-	-	-	-	-	-	-	-
12/8/2015	-	Sunny	Surface	-	-	-	-	-	-	-	-	-	-	-	-	-	-	-	-
	11:35		Middle	2	27.10	27.10	27.1	8.17	8.17	8.2	30.02	30.02	30.0	66.9	68.9	67.9	4.47	4.60	4.54
	-		Bottom	-	-	-	-	-	-	-	-	-	-	-	-	-	-	-	-
14/8/2015	-	Cloudy	Surface	-	-	-	-	-	-	-	-	-	-	-	-	-	-	-	-
	13:52		Middle	1	26.40	26.40	26.4	8.15	8.15	8.2	28.65	28.65	28.7	58.7	57.5	58.1	4.02	3.94	3.98
	-		Bottom	-	-	-	-	-	-	-	-	-	-	-	-	-	-	-	-
17/8/2015	-	Fine	Surface	-	-	-	-	-	-	-	-	-	-	-	-	-	-	-	-
	11:30		Middle	1	26.70	26.70	26.7	8.10	8.10	8.1	29.56	29.56	29.6	67.0	68.0	67.5	4.54	4.61	4.58
	-		Bottom	-	-	-	-	-	-	-	-	-	-	-	-	-	-	-	-
19/8/2015	-	Sunny	Surface	-	-	-	-	-	-	-	-	-	-	-	-	-	-	-	-
	15:03		Middle	2	27.60	27.60	27.6	8.01	8.01	8.0	28.09	28.09	28.1	50.0	49.6	49.8	3.36	3.34	3.35
	-		Bottom	-	-	-	-	-	-	-	-	-	-	-	-	-	-	-	-
21/8/2015	-	Fine	Surface	1	27.50	27.50	27.5	8.18	8.18	8.2	24.57	24.57	24.6	45.1	44.3	44.7	3.10	3.04	3.07
	14:55		Middle	-	-	-	-	-	-	-	-	-	-	-	-	-	-	-	-
	-		Bottom	3	26.80	26.80	26.8	8.06	8.06	8.1	29.76	29.76	29.8	74.2	72.2	73.2	5.01	4.88	4.95
25/8/2015	-	Fine	Surface	-	-	-	-	-	-	-	-	-	-	-	-	-	-	-	-
	9:56		Middle	2	27.00	27.00	27.0	8.19	8.19	8.2	29.73	29.73	29.7	74.1	71.9	73.0	4.99	4.83	4.91
	-		Bottom	-	-	-	-	-	-	-	-	-	-	-	-	-	-	-	-
27/8/2015	-	Fine	Surface	-	-	-	-	-	-	-	-	-	-	-	-	-	-	-	-
	11:05		Middle	2	27.20	27.20	27.2	8.09	8.09	8.1	28.63	28.63	28.6	57.5	56.7	57.1	3.88	3.82	3.85
	-		Bottom	-	-	-	-	-	-	-	-	-	-	-	-	-	-	-	-

Remarks:
Single underline denotes exceedance over Action Level.
Double underline denotes exceedance over Limit Level.



**Water Monitoring Result at Ex-WPCWA SW - South-western corners of ex-Public Cargo Works Area
Mid-Ebb Tide**

Date	Time	Weater Condition	Sampling Depth		Water Temperature			pH			Salinity			DO Saturation			DO		
					°C			-			ppt			%			mg/L		
					Value	Average		Value	Average		Value	Average		Value	Average		Value	Average	
28/7/2015	-	Fine	Surface	-	-	-	-	-	-	-	-	-	-	-	-	-	-	-	-
	8:47		Middle	1.5	27.20	27.20	27.2	8.06	8.06	8.1	25.02	25.02	25.0	61.5	61.3	61.4	4.23	4.22	4.23
	-		Bottom	-	-	-	-	-	-	-	-	-	-	-	-	-	-	-	-
30/7/2015	-	Fine	Surface	-	-	-	-	-	-	-	-	-	-	-	-	-	-	-	-
	11:26		Middle	1.5	26.50	26.50	26.5	8.26	8.26	8.3	24.96	24.96	25.0	57.6	56.9	57.3	4.02	3.97	4.00
	-		Bottom	-	-	-	-	-	-	-	-	-	-	-	-	-	-	-	-
1/8/2015	-	Fine	Surface	-	-	-	-	-	-	-	-	-	-	-	-	-	-	-	-
	11:27		Middle	1.5	25.70	25.70	25.7	8.19	8.19	8.2	29.79	29.79	29.8	51.1	49.9	50.5	3.52	3.44	3.48
	-		Bottom	-	-	-	-	-	-	-	-	-	-	-	-	-	-	-	-
3/8/2015	-	Fine	Surface	-	-	-	-	-	-	-	-	-	-	-	-	-	-	-	-
	15:01		Middle	1.5	26.50	26.50	26.5	8.16	8.16	8.2	20.93	20.93	20.9	26.1	26.0	26.1	1.85	1.85	<u>1.85</u>
	-		Bottom	-	-	-	-	-	-	-	-	-	-	-	-	-	-	-	-
5/8/2015	-	Fine	Surface	-	-	-	-	-	-	-	-	-	-	-	-	-	-	-	-
	15:41		Middle	1.0	26.40	26.40	26.4	8.29	8.29	8.3	27.42	27.42	27.4	40.2	40.3	40.3	2.77	2.78	<u>2.78</u>
	-		Bottom	-	-	-	-	-	-	-	-	-	-	-	-	-	-	-	-
7/8/2015	-	Sunny	Surface	-	-	-	-	-	-	-	-	-	-	-	-	-	-	-	-
	17:21		Middle	1.0	27.70	27.70	27.7	8.45	8.44	8.4	20.00	20.00	20.0	48.1	47.4	47.8	3.38	3.33	3.36
	-		Bottom	-	-	-	-	-	-	-	-	-	-	-	-	-	-	-	-
10/8/2015	-	Cloudy	Surface	-	-	-	-	-	-	-	-	-	-	-	-	-	-	-	-
	10:14		Middle	1.5	26.70	26.70	26.7	8.40	8.40	8.4	22.90	22.90	22.9	61.2	60.6	60.9	4.31	4.27	4.29
	-		Bottom	-	-	-	-	-	-	-	-	-	-	-	-	-	-	-	-
12/8/2015	-	Sunny	Surface	-	-	-	-	-	-	-	-	-	-	-	-	-	-	-	-
	11:24		Middle	1.0	26.70	26.70	26.7	8.27	8.27	8.3	25.18	25.18	25.2	50.9	50.4	50.7	3.53	3.50	3.52
	-		Bottom	-	-	-	-	-	-	-	-	-	-	-	-	-	-	-	-
14/8/2015	-	Cloudy	Surface	-	-	-	-	-	-	-	-	-	-	-	-	-	-	-	-
	11:37		Middle	1.0	26.20	26.20	26.2	8.35	8.35	8.4	20.15	20.15	20.2	56.4	56.8	56.6	4.07	4.10	4.09
	-		Bottom	-	-	-	-	-	-	-	-	-	-	-	-	-	-	-	-
17/8/2015	-	Fine	Surface	-	-	-	-	-	-	-	-	-	-	-	-	-	-	-	-
	16:02		Middle	1.0	26.70	26.70	26.7	8.02	8.02	8.0	26.86	26.86	26.9	38.1	37.5	37.8	2.61	2.57	<u>2.59</u>
	-		Bottom	-	-	-	-	-	-	-	-	-	-	-	-	-	-	-	-
19/8/2015	-	Sunny	Surface	-	-	-	-	-	-	-	-	-	-	-	-	-	-	-	-
	14:50		Middle	1.0	26.80	26.80	26.8	8.11	8.11	8.1	24.28	24.28	24.3	40.8	41.3	41.1	2.84	2.89	<u>2.87</u>
	-		Bottom	-	-	-	-	-	-	-	-	-	-	-	-	-	-	-	-
21/8/2015	-	Fine	Surface	-	-	-	-	-	-	-	-	-	-	-	-	-	-	-	-
	14:41		Middle	1.5	25.80	25.80	25.8	8.20	8.20	8.2	31.10	31.11	31.1	58.2	58.6	58.4	3.96	3.99	3.98
	-		Bottom	-	-	-	-	-	-	-	-	-	-	-	-	-	-	-	-
25/8/2015	-	Fine	Surface	-	-	-	-	-	-	-	-	-	-	-	-	-	-	-	-
	9:42		Middle	1.0	26.30	26.30	26.3	8.27	8.27	8.3	30.02	30.02	30.0	59.0	59.9	59.5	4.01	4.07	4.04
	-		Bottom	-	-	-	-	-	-	-	-	-	-	-	-	-	-	-	-
27/8/2015	-	Fine	Surface	-	-	-	-	-	-	-	-	-	-	-	-	-	-	-	-
	9:54		Middle	1.0	25.90	25.90	25.9	8.10	8.10	8.1	27.93	27.93	27.9	40.7	40.8	40.8	2.82	2.83	<u>2.83</u>
	-		Bottom	-	-	-	-	-	-	-	-	-	-	-	-	-	-	-	-

Remarks:
Single underline denotes exceedance over Action Level.
Double underline denotes exceedance over Limit Level.



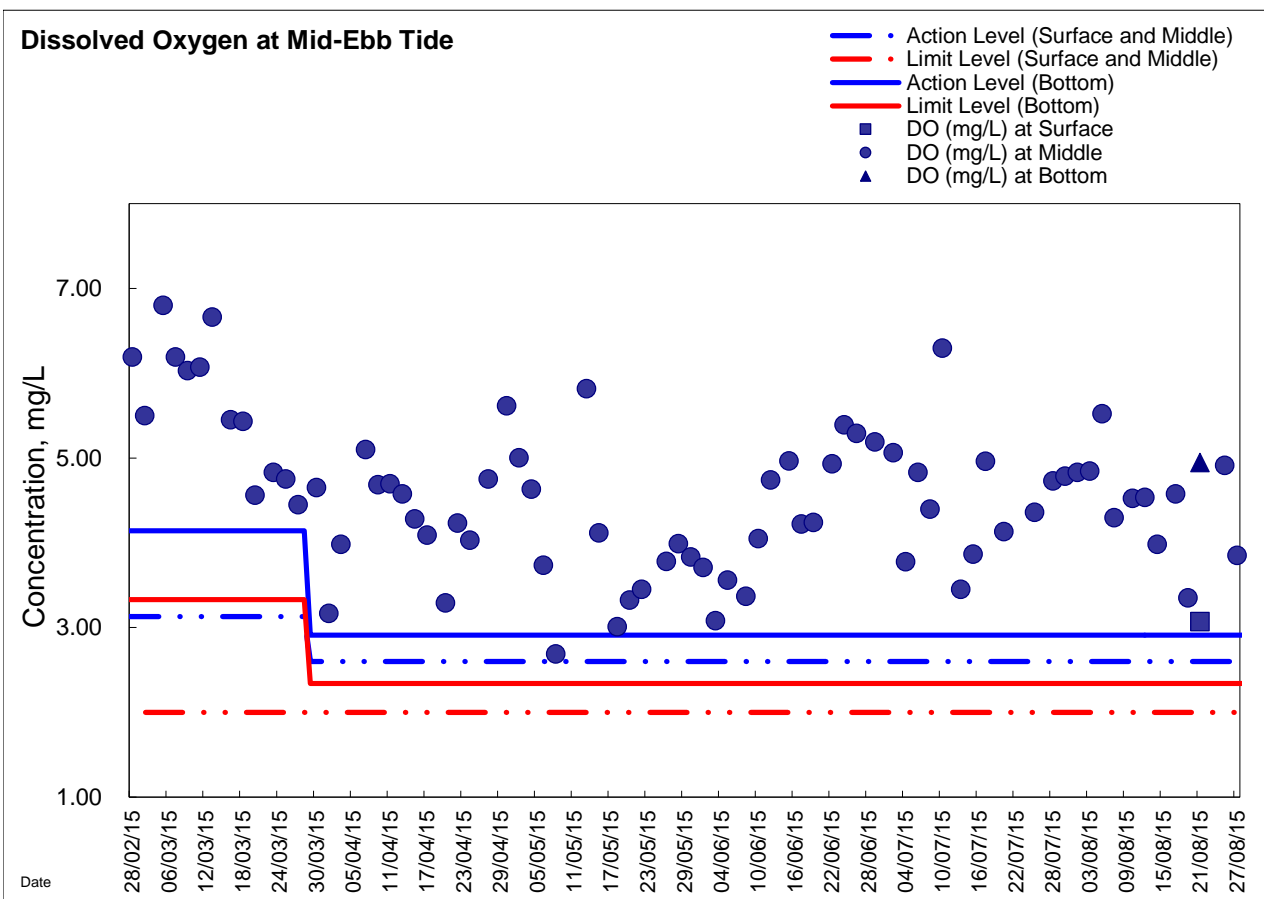
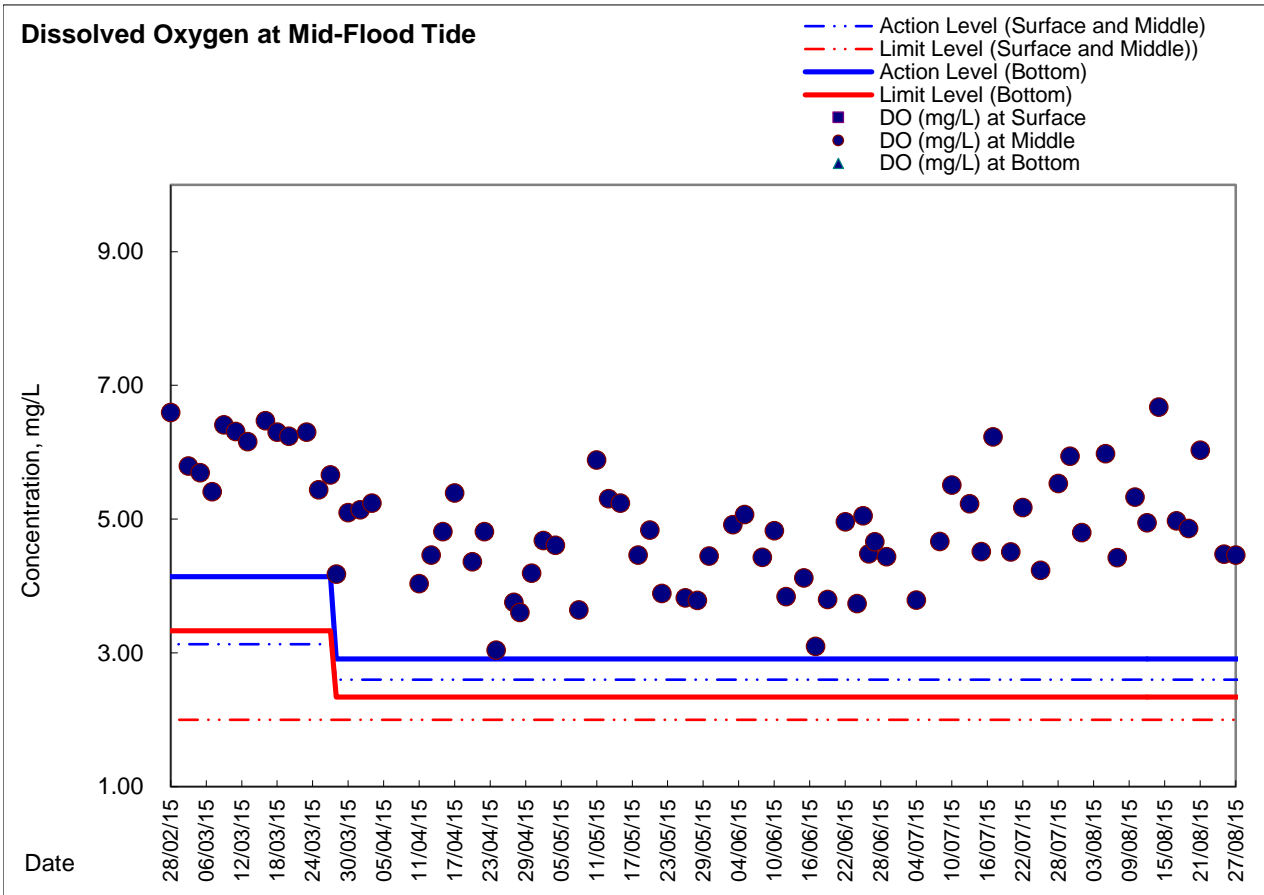
**Water Monitoring Result at Ex-WPCWA SE - South-eastern corners of ex-Public Cargo Works Area
Mid-Ebb Tide**

Date	Time	Weater Condition	Sampling Depth		Water Temperature			pH			Salinity		DO Saturation		DO				
					°C			-			ppt		%		mg/L				
					Value	Average		Value	Average		Value	Average	Value	Average	Value	Average			
28/7/2015	-	Fine	Surface	-	-	-	-	-	-	-	-	-	-	-	-	-	-	-	
	-		Middle	-	-	-	-	-	-	-	-	-	-	-	-	-	-	-	
	-		Bottom	-	-	-	-	-	-	-	-	-	-	-	-	-	-	-	
30/7/2015	-	Fine	Surface	-	-	-	-	-	-	-	-	-	-	-	-	-	-	-	
	-		Middle	-	-	-	-	-	-	-	-	-	-	-	-	-	-	-	
	-		Bottom	-	-	-	-	-	-	-	-	-	-	-	-	-	-	-	
1/8/2015	-	Fine	Surface	-	-	-	-	-	-	-	-	-	-	-	-	-	-	-	
	-		Middle	-	-	-	-	-	-	-	-	-	-	-	-	-	-	-	
	-		Bottom	-	-	-	-	-	-	-	-	-	-	-	-	-	-	-	
3/8/2015	-	Fine	Surface	-	-	-	-	-	-	-	-	-	-	-	-	-	-	-	
	-		Middle	-	-	-	-	-	-	-	-	-	-	-	-	-	-	-	
	-		Bottom	-	-	-	-	-	-	-	-	-	-	-	-	-	-	-	
5/8/2015	-	Fine	Surface	-	-	-	-	-	-	-	-	-	-	-	-	-	-	-	
	-		Middle	-	-	-	-	-	-	-	-	-	-	-	-	-	-	-	
	-		Bottom	-	-	-	-	-	-	-	-	-	-	-	-	-	-	-	
7/8/2015	-	Sunny	Surface	-	-	-	-	-	-	-	-	-	-	-	-	-	-	-	
	-		Middle	-	-	-	-	-	-	-	-	-	-	-	-	-	-	-	
	-		Bottom	-	-	-	-	-	-	-	-	-	-	-	-	-	-	-	
10/8/2015	-	Cloudy	Surface	-	-	-	-	-	-	-	-	-	-	-	-	-	-	-	
	10:12		Middle	1.0	26.60	26.60	26.6	8.39	8.39	8.4	28.87	28.87	28.9	71.7	69.8	70.8	4.89	4.76	4.83
	-		Bottom	-	-	-	-	-	-	-	-	-	-	-	-	-	-	-	-
12/8/2015	-	Sunny	Surface	-	-	-	-	-	-	-	-	-	-	-	-	-	-	-	
	11:20		Middle	0.5	26.90	26.90	26.9	8.26	8.26	8.3	30.92	30.92	30.9	61.5	60.3	60.9	4.12	4.04	4.08
	-		Bottom	-	-	-	-	-	-	-	-	-	-	-	-	-	-	-	-
14/8/2015	-	Cloudy	Surface	-	-	-	-	-	-	-	-	-	-	-	-	-	-	-	
	11:35		Middle	1.0	26.00	26.00	26.0	8.26	8.26	8.3	28.93	28.93	28.9	50.7	52.2	51.5	3.49	3.59	<u>3.54</u>
	-		Bottom	-	-	-	-	-	-	-	-	-	-	-	-	-	-	-	-
17/8/2015	-	Fine	Surface	-	-	-	-	-	-	-	-	-	-	-	-	-	-	-	
	15:58		Middle	0.5	27.30	27.30	27.3	8.10	8.10	8.1	28.19	28.19	28.2	37.0	37.3	37.2	2.49	2.52	<u>2.51</u>
	-		Bottom	-	-	-	-	-	-	-	-	-	-	-	-	-	-	-	-
19/8/2015	-	Sunny	Surface	-	-	-	-	-	-	-	-	-	-	-	-	-	-	-	
	14:46		Middle	0.5	27.30	27.30	27.3	8.19	8.19	8.2	30.48	30.48	30.5	50.0	48.9	49.5	3.34	3.26	<u>3.30</u>
	-		Bottom	-	-	-	-	-	-	-	-	-	-	-	-	-	-	-	-
21/8/2015	-	Fine	Surface	-	-	-	-	-	-	-	-	-	-	-	-	-	-	-	
	14:35		Middle	1.0	26.50	26.50	26.5	8.16	8.16	8.2	31.04	31.04	31.0	59.4	58.4	58.9	4.00	3.93	3.97
	-		Bottom	-	-	-	-	-	-	-	-	-	-	-	-	-	-	-	-
25/8/2015	-	Fine	Surface	-	-	-	-	-	-	-	-	-	-	-	-	-	-	-	
	9:40		Middle	0.5	26.50	26.50	26.5	8.24	8.24	8.2	31.36	31.36	31.4	70.9	68.6	69.8	4.76	4.60	4.68
	-		Bottom	-	-	-	-	-	-	-	-	-	-	-	-	-	-	-	-
27/8/2015	-	Fine	Surface	-	-	-	-	-	-	-	-	-	-	-	-	-	-	-	
	9:48		Middle	0.5	26.00	26.00	26.0	8.20	8.20	8.2	32.61	32.61	32.6	63.6	62.2	62.9	4.29	4.20	4.25
	-		Bottom	-	-	-	-	-	-	-	-	-	-	-	-	-	-	-	-

Remarks:
Single underline denotes exceedance over Action Level.
Double underline denotes exceedance over Limit Level.

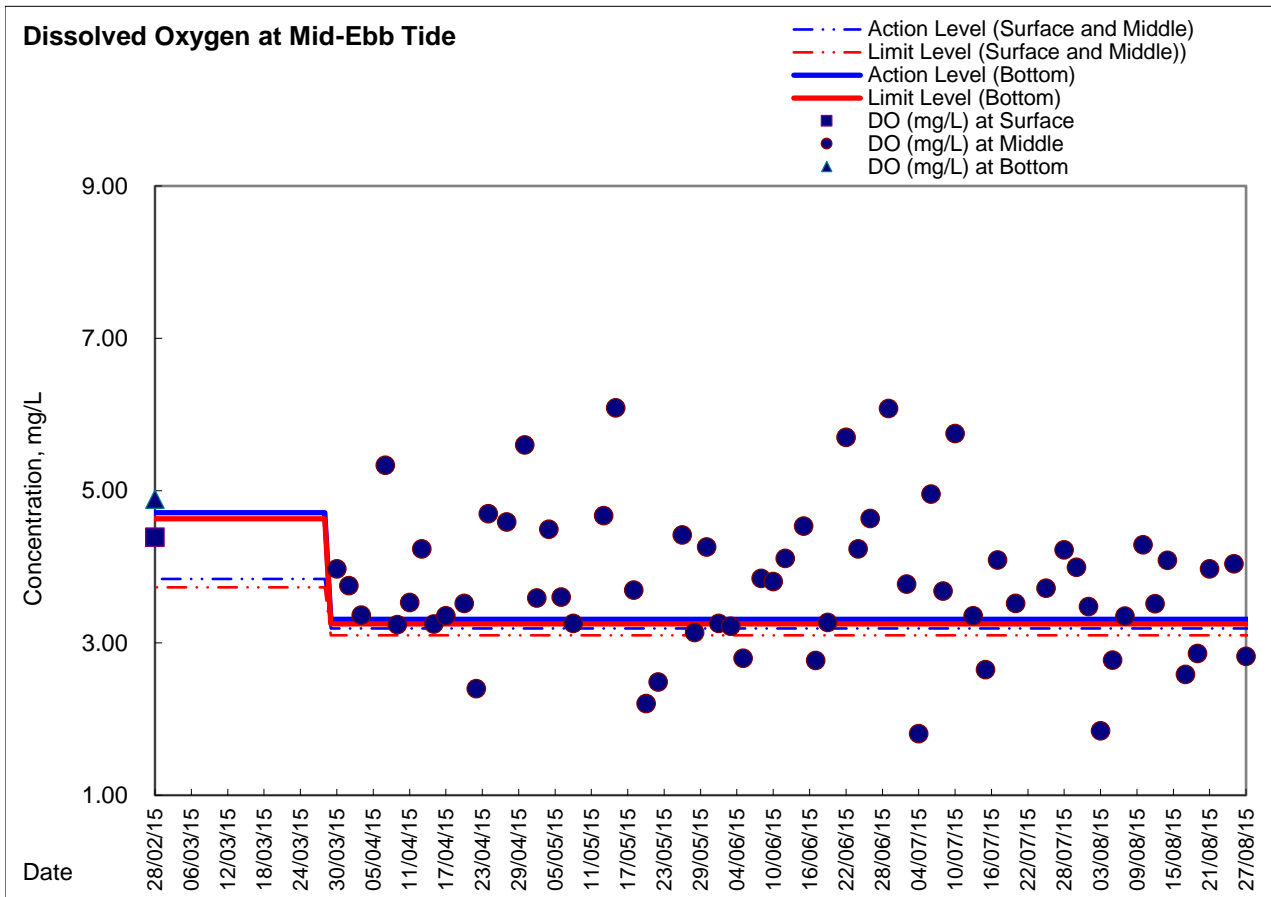
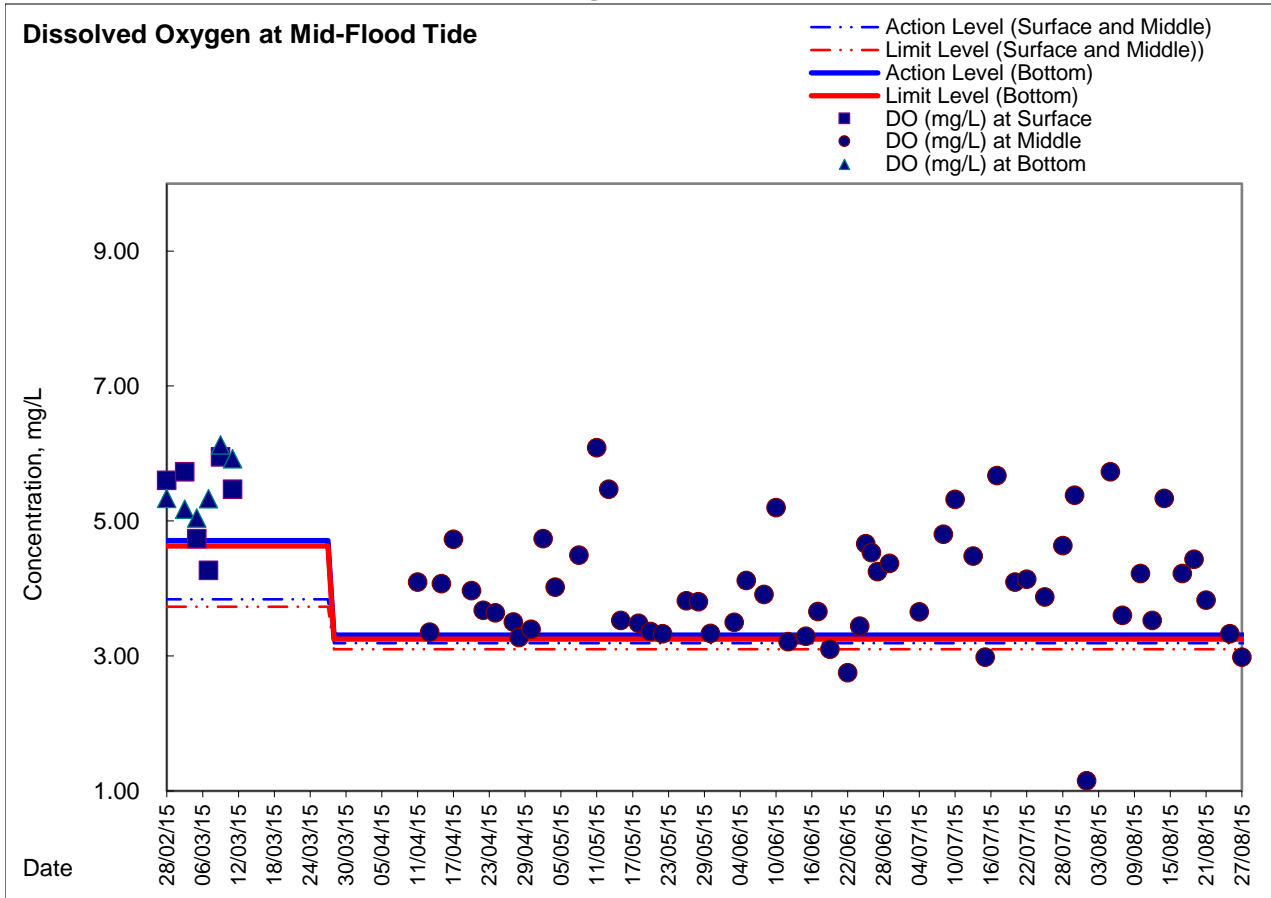


Graphic Presentation of Enhanced Water Monitoring Results (DO) at C6 - Excelsior Hotel





Graphic Presentation of Enhanced Water Monitoring Results (DO) at Ex-WPCWA SW - South-western corners of ex-Public Cargo Works Area





Graphic Presentation of Enhanced Water Monitoring Results (DO) at Ex-WPCWA SE - South-eastern corners of ex-Public Cargo Works Area

